

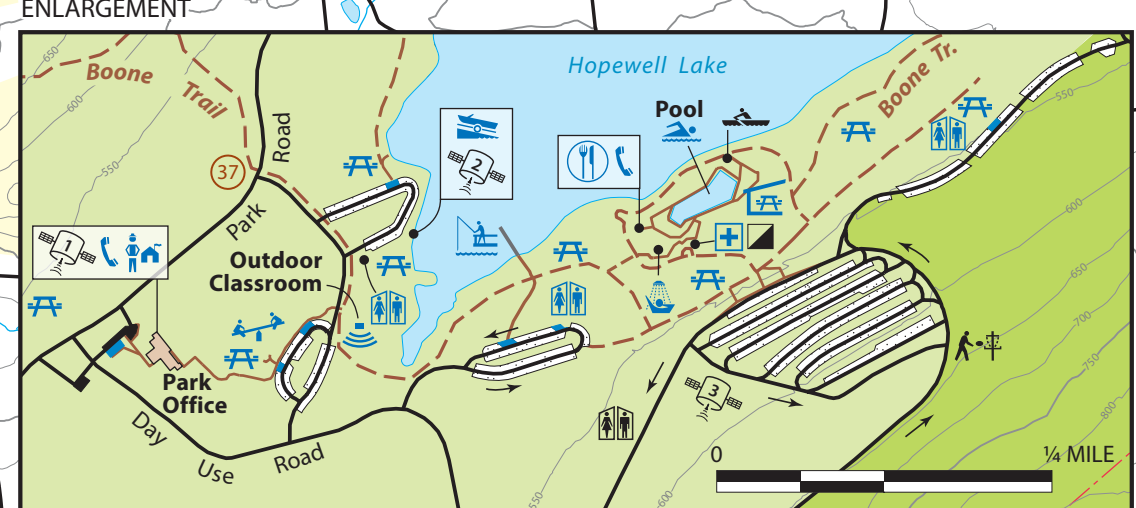
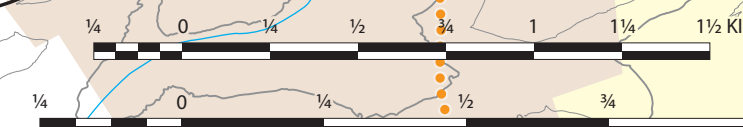
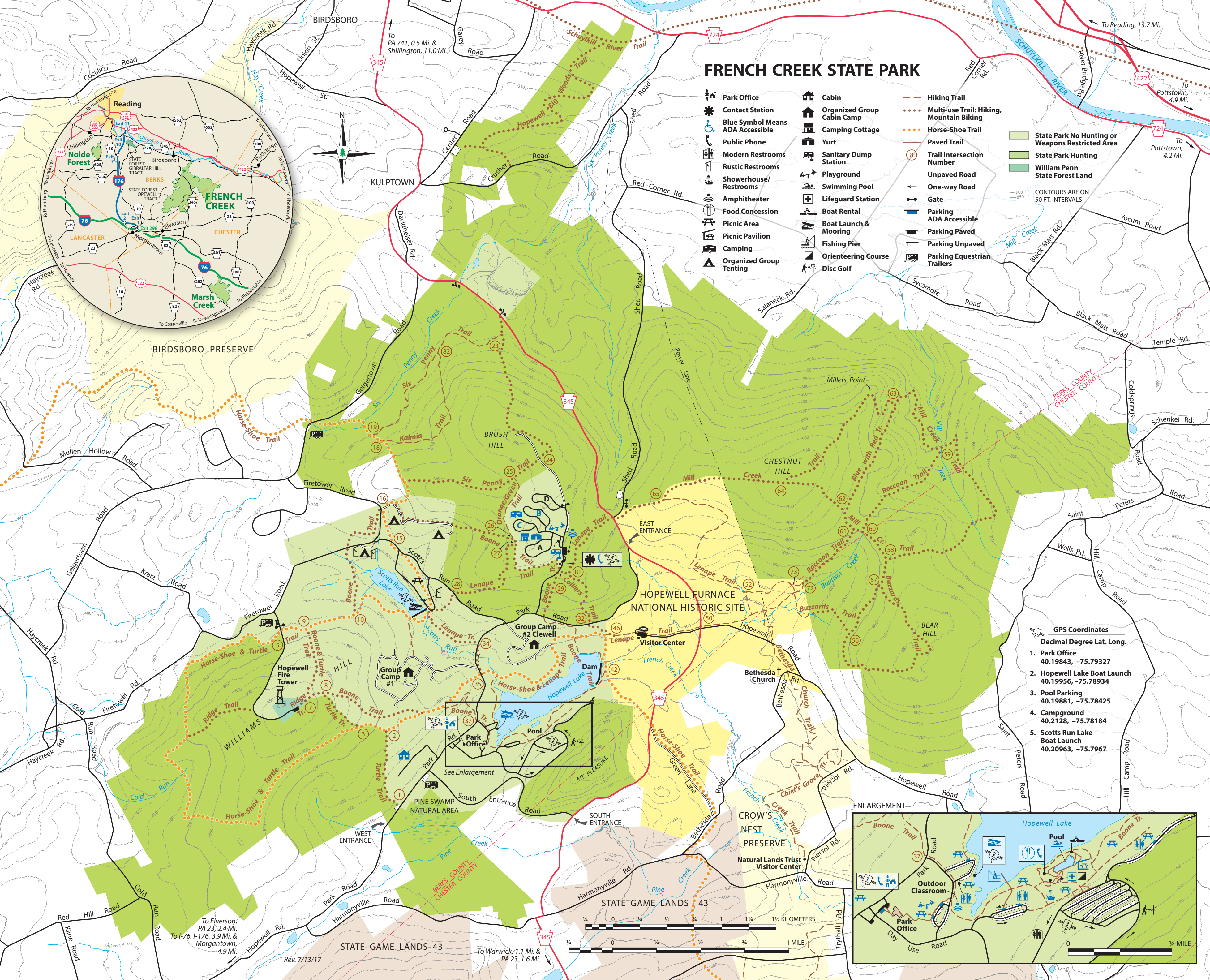
FRENCH CREEK STATE PARK

- | | | | | | |
|--|----------------------------------|--|----------------------------|--|--|
| | Park Office | | Cabin | | Hiking Trail |
| | Contact Station | | Organized Group Cabin Camp | | Multi-use Trail: Hiking, Mountain Biking |
| | Blue Symbol Means ADA Accessible | | Camping Cottage | | Horse-Shoe Trail |
| | Public Phone | | Yurt | | Paved Trail |
| | Modern Restrooms | | Sanitary Dump Station | | Trail Intersection Number |
| | Rustic Restrooms | | Playground | | Unpaved Road |
| | Showerhouse/Restrooms | | Swimming Pool | | One-way Road |
| | Amphitheater | | Lifeguard Station | | Gate |
| | Food Concession | | Boat Rental | | Parking ADA Accessible |
| | Picnic Area | | Boat Launch & Mooring | | Parking Paved |
| | Picnic Pavilion | | Fishing Pier | | Parking Unpaved |
| | Camping | | Orienteering Course | | Parking Equestrian Trailers |
| | Organized Group Tenting | | Disc Golf | | |

State Park No Hunting or Weapons Restricted Area
 State Park Hunting
 William Penn State Forest Land

CONTOURS ARE ON 50 FT. INTERVALS

- GPS Coordinates**
 Decimal Degree Lat. Long.
1. Park Office
40.19843, -75.79327
 2. Hopewell Lake Boat Launch
40.19956, -75.78934
 3. Pool Parking
40.19881, -75.78425
 4. Campground
40.2128, -75.78184
 5. Scotts Run Lake Boat Launch
40.20963, -75.7967



To Elverson, PA 23, 2.4 Mi.
 To I-76, I-176, 3.9 Mi. & Morgantown, 4.9 Mi.

To Warick, 1.1 Mi. & PA 23, 1.6 Mi.

Rev. 7/13/17