



# National Parks Air Tour Management Act of 2000

Hawai'i Volcanoes National Park  
Open House Public Meetings  
Comment on Preliminary  
Alternatives

April 18 - 20, 2011



The National Parks Air Tour Management Act requires the Federal Aviation Administration, in cooperation with the National Park Service, to develop an Air Tour Management Plan (ATMP) for each park or tribal land where air tour operations occur or are proposed.





Objective of an ATMP: “develop acceptable and effective measures to mitigate or prevent the significant adverse impacts, if any, of commercial air tour operations upon the natural and cultural resources, visitor experiences, and tribal lands.”





## Agency roles and responsibilities from the Act:

The Federal Aviation Administration (FAA) has sole authority to control airspace over the United States and FAA has the authority to preserve, protect, and enhance the environment by minimizing, mitigating, or preventing the adverse effects of overflights on public and tribal lands.





## Agency roles and responsibilities from the Act:



NPS has the responsibility of conserving the scenery, natural and historic objects, and wildlife in national parks and of providing for the enjoyment of the national parks in ways that leave the national parks unimpaired for future generations.



## The Act applies to:

- Air tours within ½ mile of park
- Over tribal lands within or abutting a park
- 5,000 feet altitude or less above ground level (AGL)

## Exceptions:

- Alaska
- Grand Canyon National Park
- Rocky Mountain National Park
- Flights over Lake Mead NRA when used solely as Grand Canyon National Park transportation route



## ***ATMP must comply with the *National Environmental Policy Act* – NEPA***

- FAA – Lead NEPA Agency
- NPS – Cooperating NEPA Agency
- Tribe – If abutting tribal lands, tribe must be solicited as cooperating agency
- Act requires FAA and NPS to sign the final environmental decision document for each park



# National Parks Air Tour Management Program

- 85 National Park Units
- 23 Tribal Lands
- 71 Air Tour Operators
- 302,601 Annual Interim Operations  
Authorized



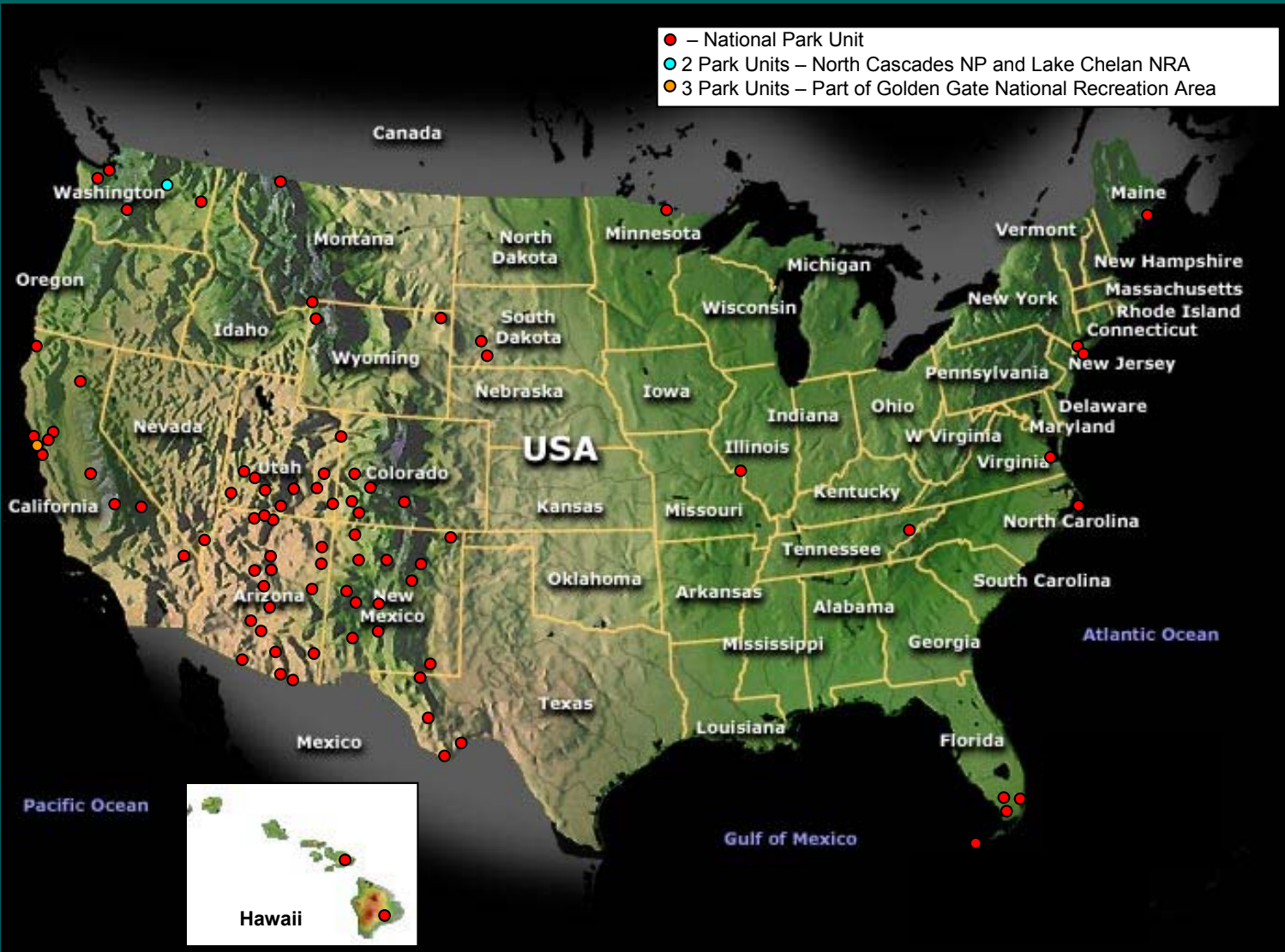
# Air Tour Management Plan Environmental Impact Statement



Federal Aviation Administration  
U. S. Department of Transportation  
Special Programs Office



National Park Service  
U.S Department of the Interior  
Hawai'i Volcanoes National Park





## FAA and NPS are currently working on the following ATMPs:

- Mount Rushmore National Monument
- Badlands National Park
- Hawai'i Volcanoes National Park
- Haleakala National Park
- Death Valley National Park
- Mount Rainier National Park
- Petrified Forest National Park



## ATMP/NEPA Process – Planning and Environmental Analysis

- Public Scoping
- Alternatives
- Section 106 of the National Historic Preservation Act and tribal matters
- Section 7 consultation with US Fish & Wildlife Service
- Environmental analysis
  - FAA Order 1050.1E
  - NPS Director's Order #12
- Draft and Final NEPA document
- Decision



## Public involvement opportunities

- Scoping
- Public comment period
- Act specifies at least one public meeting
- Contact lists

## Agencies and other opportunities

- Endangered species consultations
- Participation of tribal communities
- Agency meeting





# Alternatives Development per the Act

## Potential Alternatives and other ATMP Elements

### An ATMP:

- a. May prohibit commercial air tour operations in whole or in part
- b. May establish conditions for the conduct of air tour operations including routes, altitudes, time-of-day restrictions, restrictions for particular events, maximum number of flights, etc
- c. Shall apply to all commercial air tour operations within  $\frac{1}{2}$  mile outside the boundary of a national park



## Potential Alternatives and other ATMP Elements

An ATMP (cont.):

- d. Shall include incentives for the adoption of quiet aircraft technology
- e. Shall provide for the allocation of opportunities to conduct air tours when the ATMP limits the number of operations
- f. Shall justify and document the need for measures taken pursuant to items (a) through (e), above, and include such justifications in the record of decision”





- Each ATMP will require a federal rulemaking action
- ATMP rulemaking completed by FAA



## Definition of Interim Operating Authority

Existing Commercial Air Tour Operator- A commercial air tour operator that was actively engaged in the business of providing commercial air tour operations over a national park at any time during the 12-month period ending on April 5, 2000.

Annual authorization (interim operating authority – IOA) will be given for the greater of the number of flights used within the 12 month period prior to April 5, 2000

Or

The average number of flights per 12 month period used within the 36 month period prior to April 5, 2000, and for seasonal flights the number of flights used during the season or seasons covered by that 12 month period





## **Interim Operating Authority – as granted by FAA (Federal Register, Vol. 70, No. 194, October 7, 2005, page 59778)**

### **14 operators: 28,441 operations**

Above It All = 3878

Big Island Air, Inc. = 1643

Call Air, Inc. = 102

Hawaii Helicopters, Inc. = 141

Blue Hawaiian Helicopters = 12413

Tropical Helicopters = 1684

Volcano Heli-Tours, Volcano Helicopters, Inc. = 800

Maui Air, Volcano Air Tours = 611

Mokulele Flight Service, Inc. = 60

Paragon Air, Inc. = 1019

Magnum Helicopters (Rainbow Pacific) = 45

Safari Helicopter Tours = 3920

Makani Kai helicopters (Schuman Aviation Company) = 25

Sunshine Helicopters, Inc. =2100



# Background

## Red Lava=Air Tours

1983: Kilauea's East Rift eruptions at Pu'u Ō'ō start air tour industry on Hawaii Island. Red lava viewing attraction.



2000 NPATMA  
IOA: 28,441  
flights

During peak periods, the park experiences up to 60 flights per day.

Air tours are lava bound or in search of an eruption view.



Flights circle multiple times at viewing areas and fly above neighboring communities.



# Hawai'i Volcanoes ATMP History

2004 NOI for EA/Public Scoping

2005 Internal Alts Development (12 Alts)

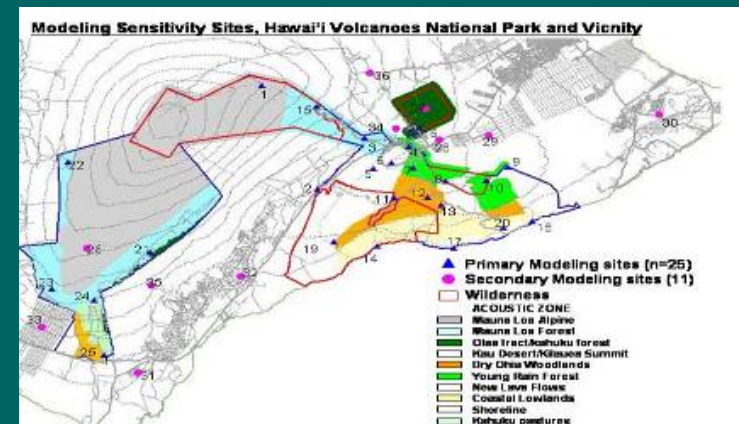
- Sensitivity Modeling/Acoustic Modeling/Maps
- EA to EIS/Alts. Development

2007 Internal Alts Workshops

FALL 2009 FAA/NPS Internal Reviews

FALL 2010 NPS Completes Internal Review of Draft Alts.  
Approved by PWR Acting Regional Director

December 2010 FAA Approves Draft Alts



# Issues

## Cultural

- Kīlauea Volcano is the home of **Pelehonuamea**, deity of Hawaiian Volcanoes (Ka Piko O Ka Honua)
- Red lava represents the birth of Pele

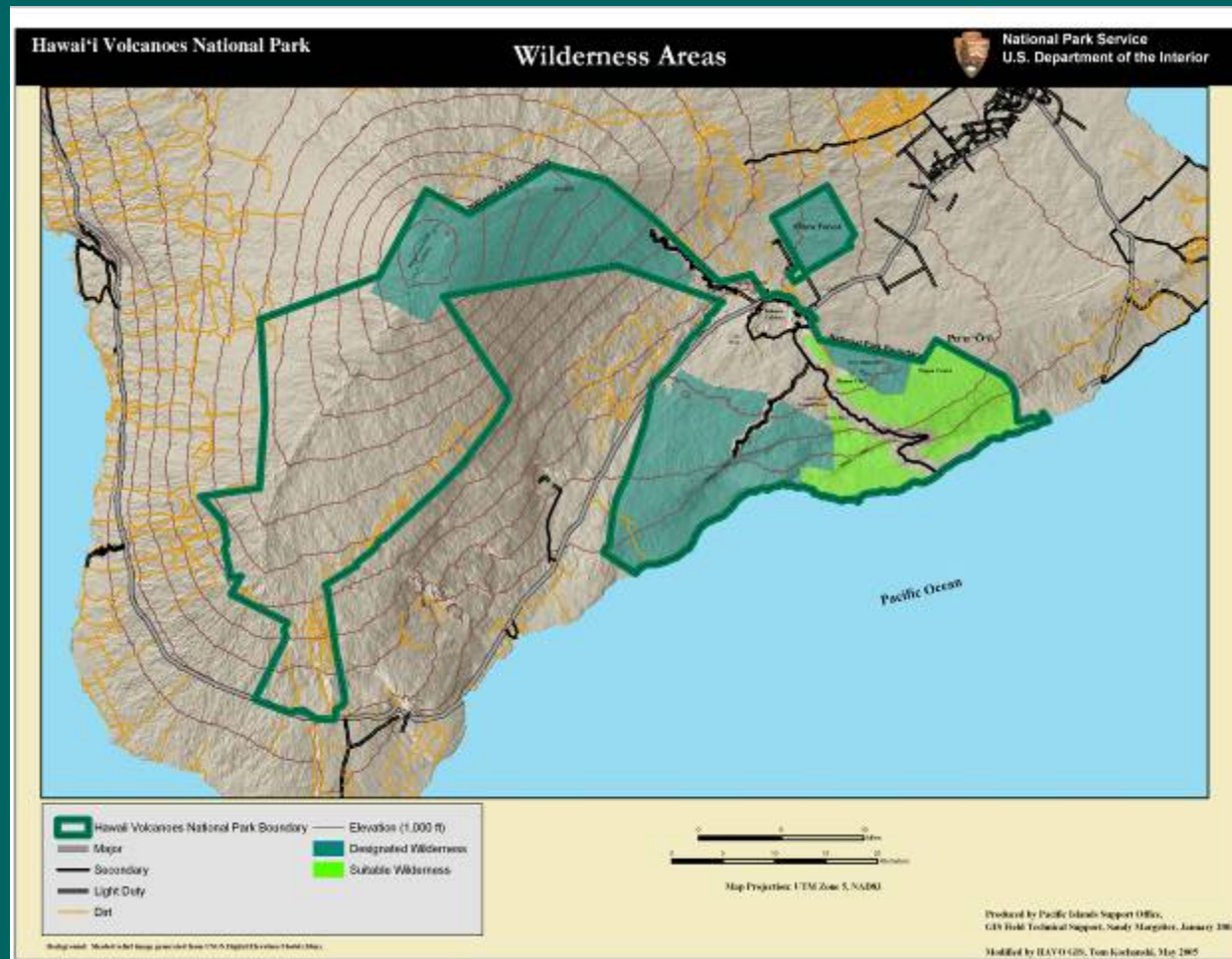


Traditional use includes chants and dance that depend upon natural sounds and unobstructed vistas; skies are a layered extension of a sacred landscape



# Issues

## Designated Wilderness 130,950 acres (GIS)







# Issues

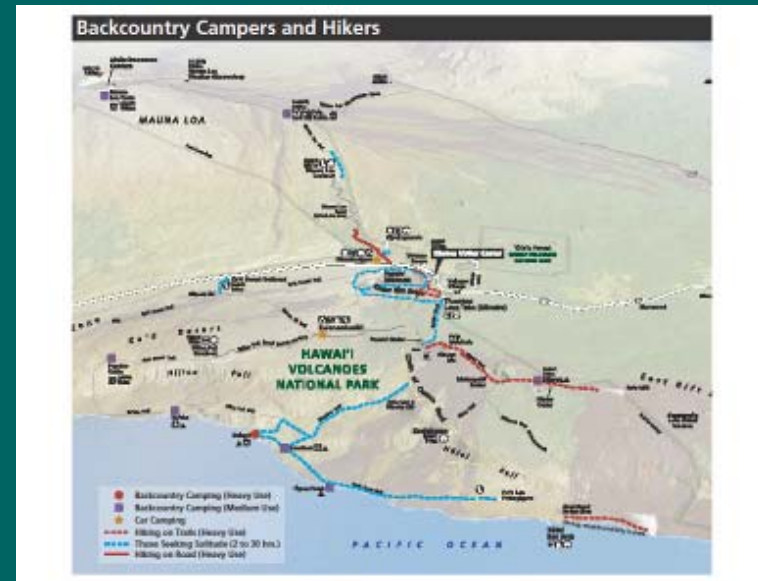
## Visitor Experience and Soundscapes



- No commercial flight paths
- HAVO has locations with very quiet soundscapes (10-15 dBl.)

▪ Concentrations of visitors and air tours.

▪ Visitors exposed to unexpected, multiple air tours in quiet soundscapes.





# Issues



**Widespread  
Endangered Bird Species**

**Year-round/Overlapping  
Nesting Seasons ( 7 T&E birds)**

**Concentrated Recovery Areas  
Vary Year to Year**

**Active Recovery Sites for Hawaiian Goose (Nene) Year 2000=1000 individuals  
Critically Endangered Forest Birds**



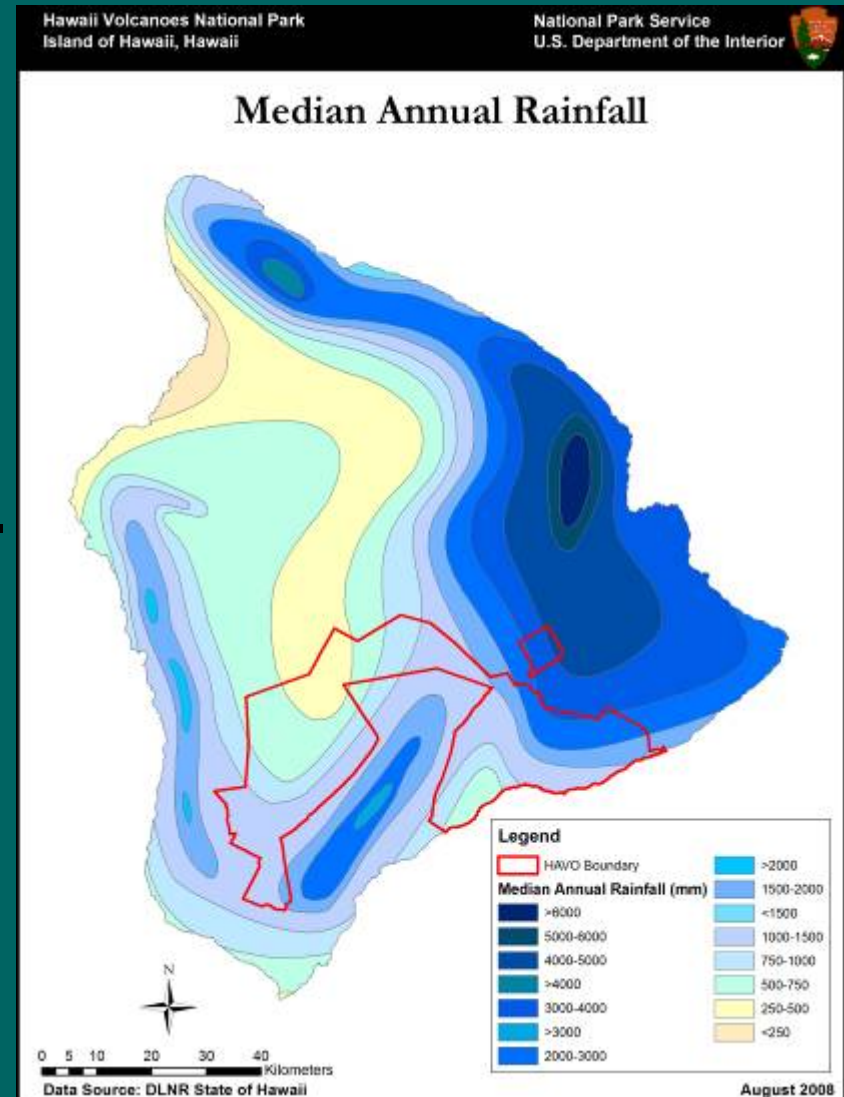
# Safety

## Routine Weather

▪ Prevailing trade winds create constant and routine inversion.

## Altitude Deviations

▪ Hawaii FAA safety regs allow pilot discretion to drop to 200'-500' above ground level for safety reasons.





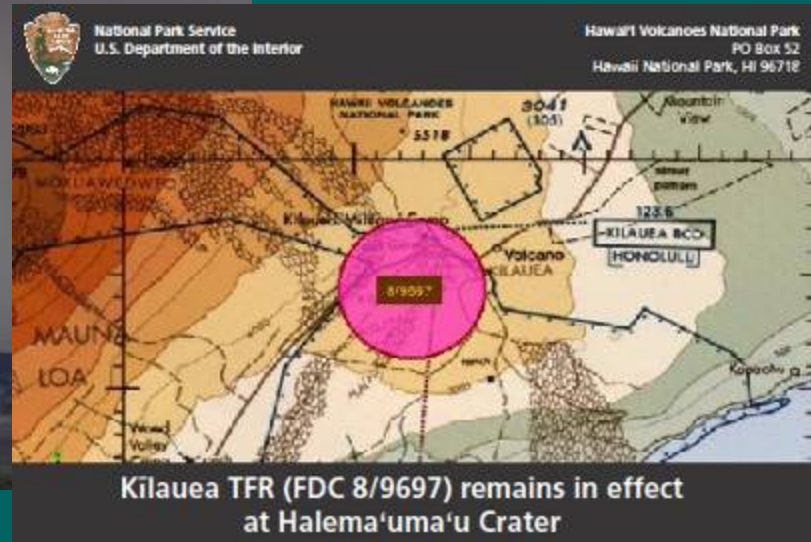


# Issues

Kīlauea and  
Mauna Loa  
are  
Active  
Volcanoes



2008 Kīlauea Summit Eruption



Kīlauea TFR (FDC 8/9697) remains in effect  
at Halema'uma'u Crater

# Alternative Elements

- Maximum and minimum altitudes
- Caps on numbers of overflights
- Weather routes
- Competitive bidding – must bid if set caps on numbers
- Quiet Technology
- Curfews
- Reporting requirements for fee payments
- Adaptive Management
- Pilot Education

# Alternative 1 No Action /IOA

Objective: Required by NEPA CEQ

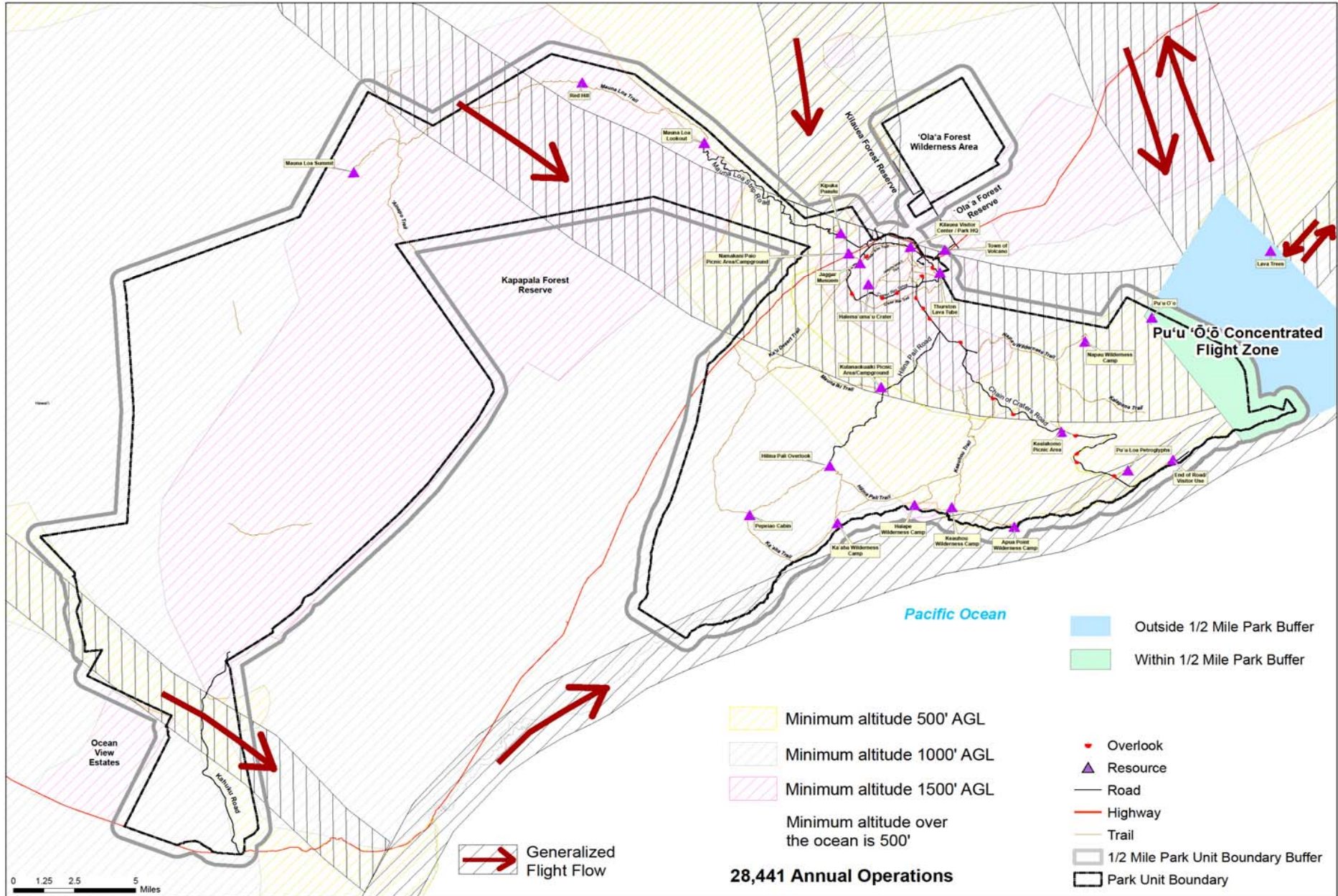
- No Action: What is legally-allowed and would continue under existing law: 28,441
- Current condition baseline: What is actually being flown? 12,000-18,000
- Routes? Kilauea TFR may be analyzed in current condition routes, otherwise no mandatory flight routes or zones.

# Hawai'i Volcanoes National Park

DRAFT Alternative 1 - No Action IOA



April, 2011





# Alternative 2

Objective: Examines impacts of no air tours in the ATMP planning area

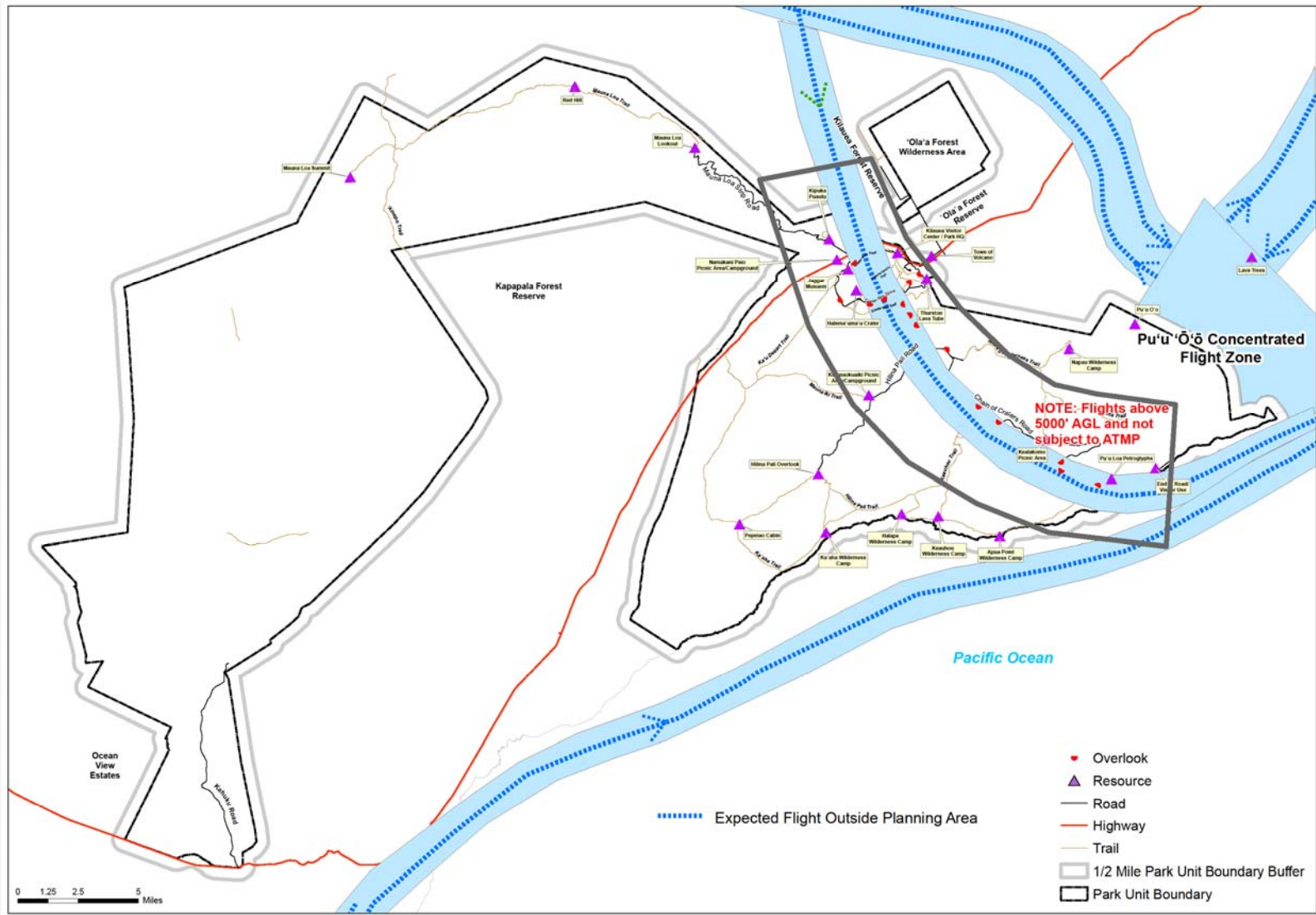
- Greatest protection for park resources, visitors and safety
- Overflights continue outside of planning jurisdiction: ½ mile outside of park boundary; above 5,000 ft AGL if over park.
- Viewing of lava flows on Kīlauea's SE rift zone and ocean lava flows possible. Insures continued economic viability of air tour operators but may concentrate community noise issues.

# Hawai'i Volcanoes National Park

DRAFT Alternative 2 - No Park Air Tours



April, 2011



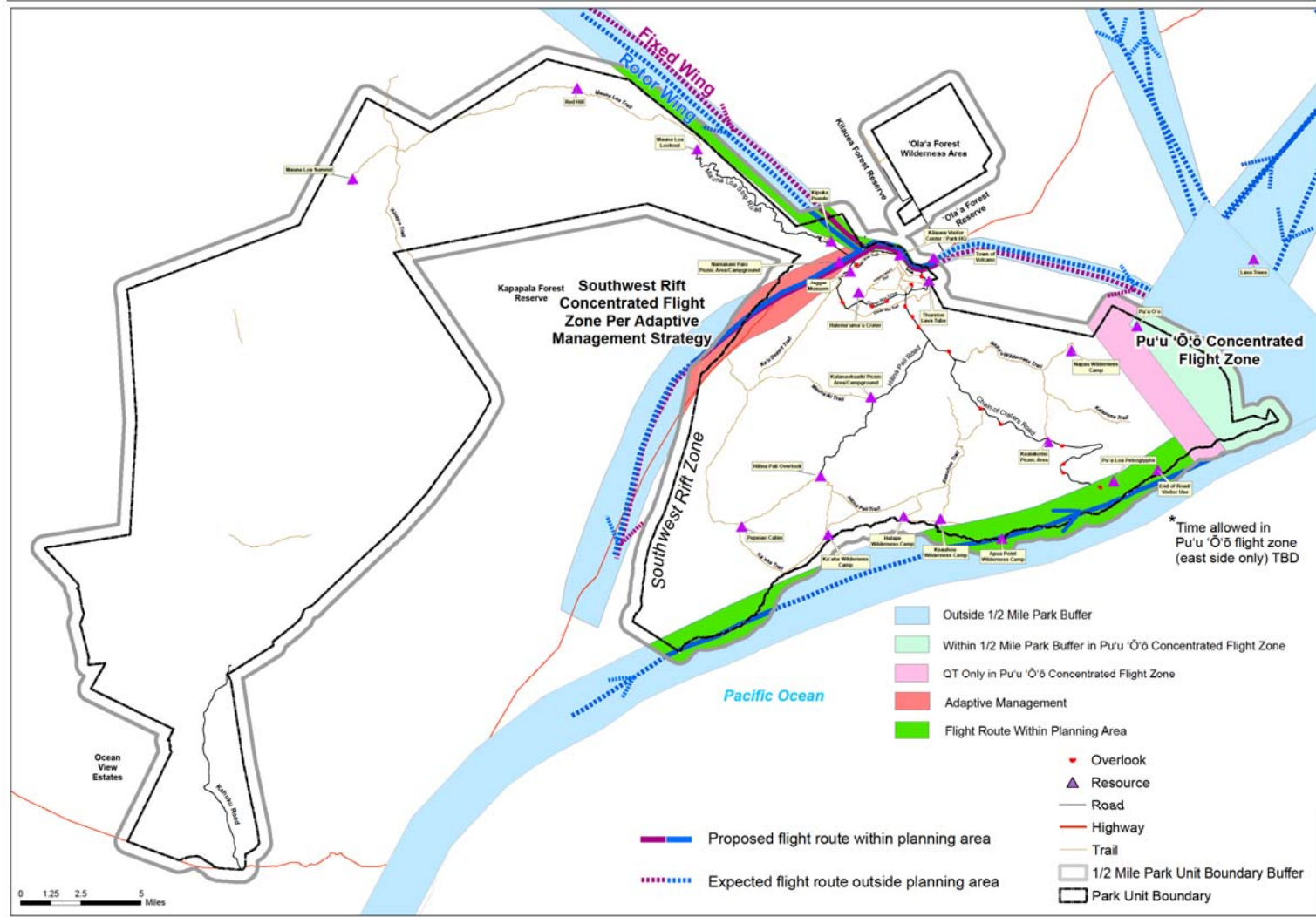
# Alternative 3

Objective: Examines impacts of providing multiple air tour access to the most volcanically active areas of the park, with mitigation and adaptive management for future change.

- Adaptive mgmt for routes and species
- Caps on numbers of flights and daily caps
- Time limit on loitering / circling
- Sunday curfews/event restrictions
- Quiet Technology: Incentives on caps, altitude, time of day, day of week subject to analysis
- Mandatory pilot education

# Hawai'i Volcanoes National Park

April, 2011 **DRAFT** Alternative 3 - Access to East and Southwest Rift Zones; Mitigation Measures and Adaptive Management for Southwest Rift Zone





# Alternative 4

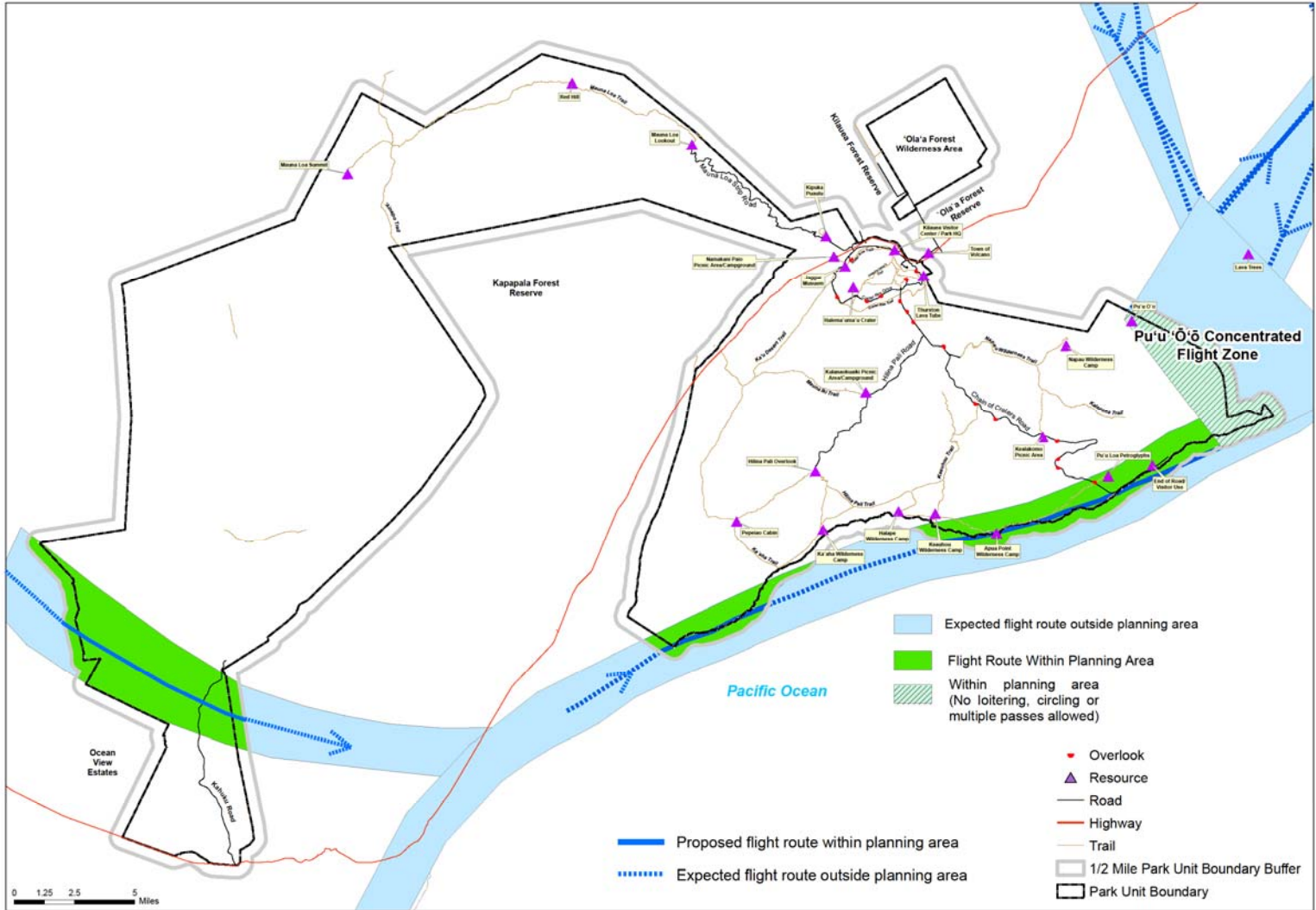
Objective: Examines impacts of providing air tour access to SE Rift zone; west side access across Kahuku. Heart of park free of air tours

- Adaptive mgmt for routes and species
- Caps on numbers of flights and *weekly caps*
- Loitering / circling *not allowed*
- Sunday curfew and *voluntary* event restrictions (10-4pm)
- Potential quiet technology relief for time of day etc. subject to impacts analysis
- *Voluntary* pilot training/ education

# Hawai'i Volcanoes National Park

## DRAFT Alternative 4 - East Rift Zone Access

April, 2011



# Alternative 5

**Objective: Examines impacts of providing multiple air tour access to historically active volcanic areas of the park with no mitigations**

- Adaptive mgmt for routes and species
- Caps on numbers of flights *annually but no daily or weekly caps*
- Loitering / circling restrictions TBD
- Curfews and event restrictions - *none*
- Quiet technology – *minimal incentives*
- Training, pilot education - *none*

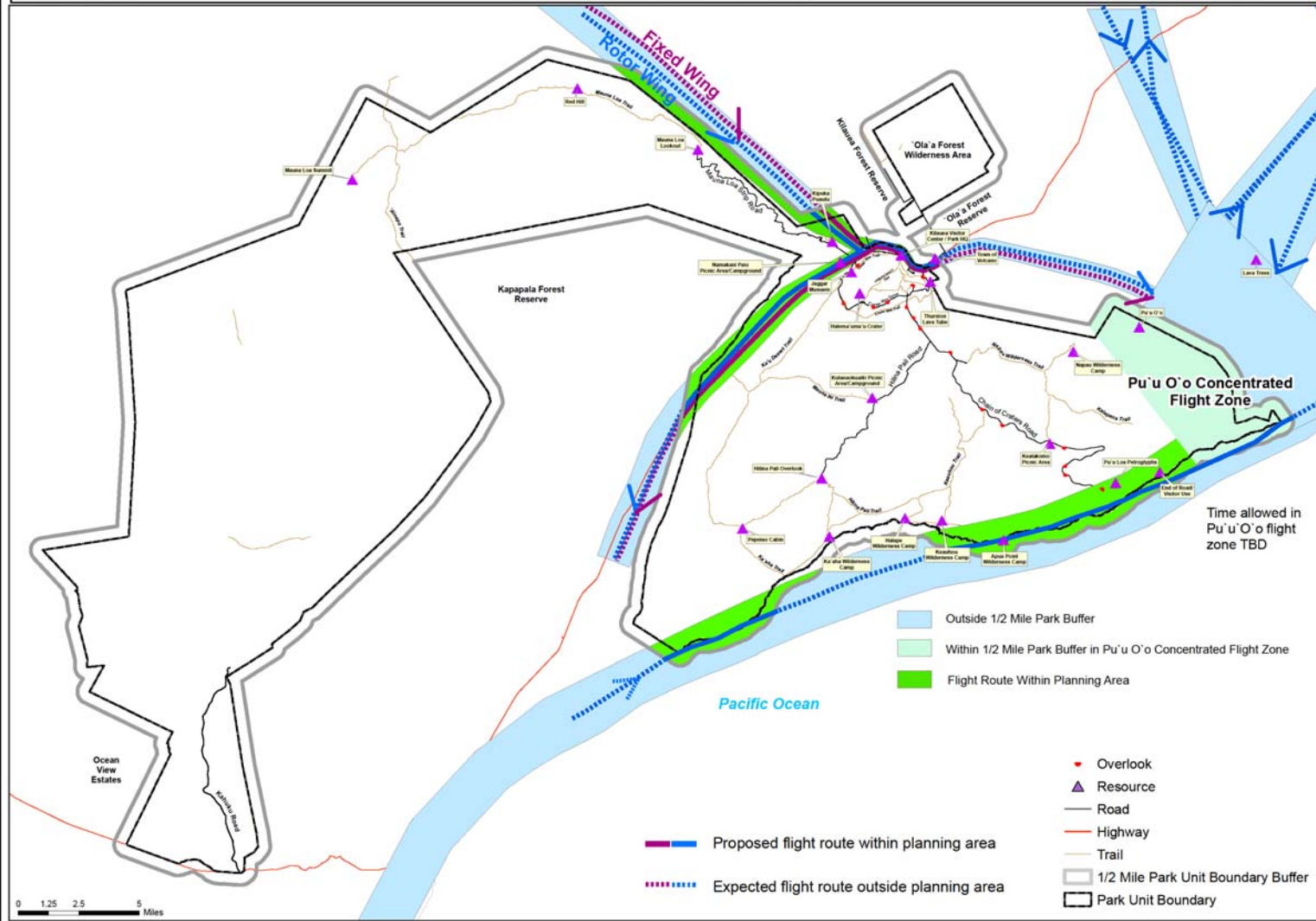
# Hawai'i Volcanoes National Park

DRAFT Alternative 5 - Access to East and Southwest Rift Zones; Limited Mitigation; IOA

October 7th, 2009

Draft For FAA/NPS Deliberative Process Only

Status:  
Moving Forward





# Next Steps

2011

- Public Review of Preliminary Draft Alternatives
- Revision of Draft Alternatives

2012

- Impacts Analysis
- Draft EIS to public





## Questions??

Please let us know if you have any  
questions about the  
National Parks Air Tour Management Act

Mahalo for your interest in the  
Hawai'i Volcanoes National Park  
Air Tour Management planning process