



## Box Parfleche

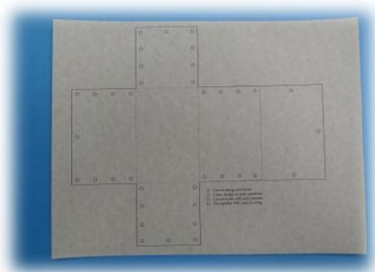
### Directions for 1 Box Parafleche

#### Materials:

- A copy of the box parfleche pattern on tan or beige card stock
- Scissors
- Your choice of crayons, markers, colored pencils, or paint and paint brushes
- Hole punch
- Pencil
- Ruler
- \*optional\*: If you have access to pattern blocks or tangrams they may be useful in creating geometric shapes for a design.
- String or colored yarn (beige, red, or blue)
  - 4 pieces 10"
  - 3 pieces 4"
- Time and patience

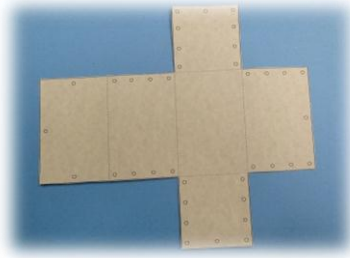
#### Directions:

1. Please read all instructions before starting this project.
2. Trace or make a copy of the box parfleche pattern on tan or beige card stock.

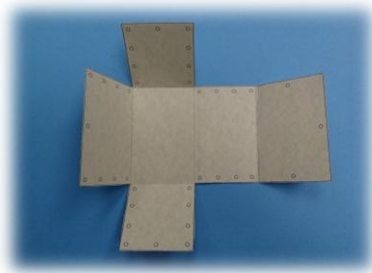




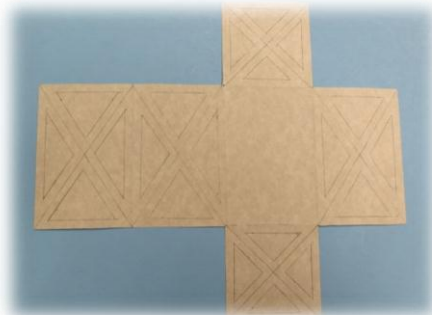
3. Use a scissors to cut out the box parfleche pattern following only the solid **BLACK** lines.



4. You will fold on the dotted lines using them as your guide.  
(\*Note: I folded so I could see the lines on the outside, and then reversed the folds when I was done so they were on the inside).

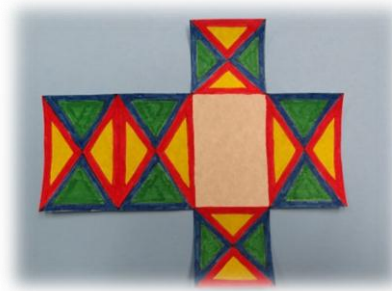


5. Using a pencil and a ruler, or your pattern blocks or tangrams, design the pattern you would like on the blank side of the envelope parfleche.

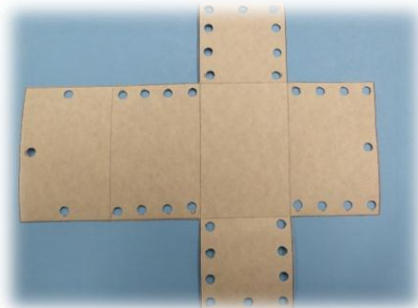




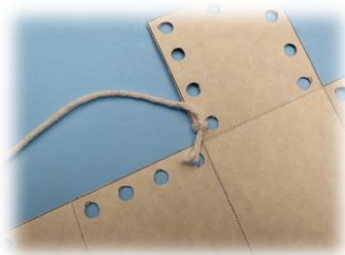
6. Color your design. The colors typically used were blue, red, yellow, green, brown and black.



7. Following the pattern on the inside of the box parfleche use the hole punch to punch the holes. Be careful not to get too close to the edges.



8. Tie a knot using one of the 10 inch strings or yarn in one of the bottom holes on one of the little squares.

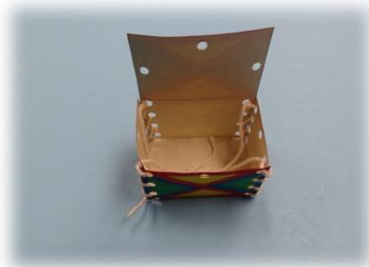




9. Lace up the corner and tie a knot at the end when you get though all the holes.



10. Repeat steps 8 and 9 for the other three sides.



11. Tie one of the 4 inch strings or yarn in a hole in the middle of the top (lid) of the box and one on each of the two sides. I did not make a knot with these.





**National Park Service**  
**U.S. Department of the Interior**

Knife River Indian Villages  
National Historic Site

PO Box 9  
Stanton, ND 58571

701/ 745-3300 phone  
701/ 745-3708 fax

---

## Notes:

\*Be gentle when lacing the box parfleche and tying as you may pull too hard and break through the paper near the holes you made.

\* You may enlarge the pattern if you would like to make a larger envelope parfleche. You will need a longer string or yarn for a larger pattern.

\*By using stiff paper such as card stock, the pattern will be sturdier than that of copy or construction paper and give one the idea of how stiff rawhide is.