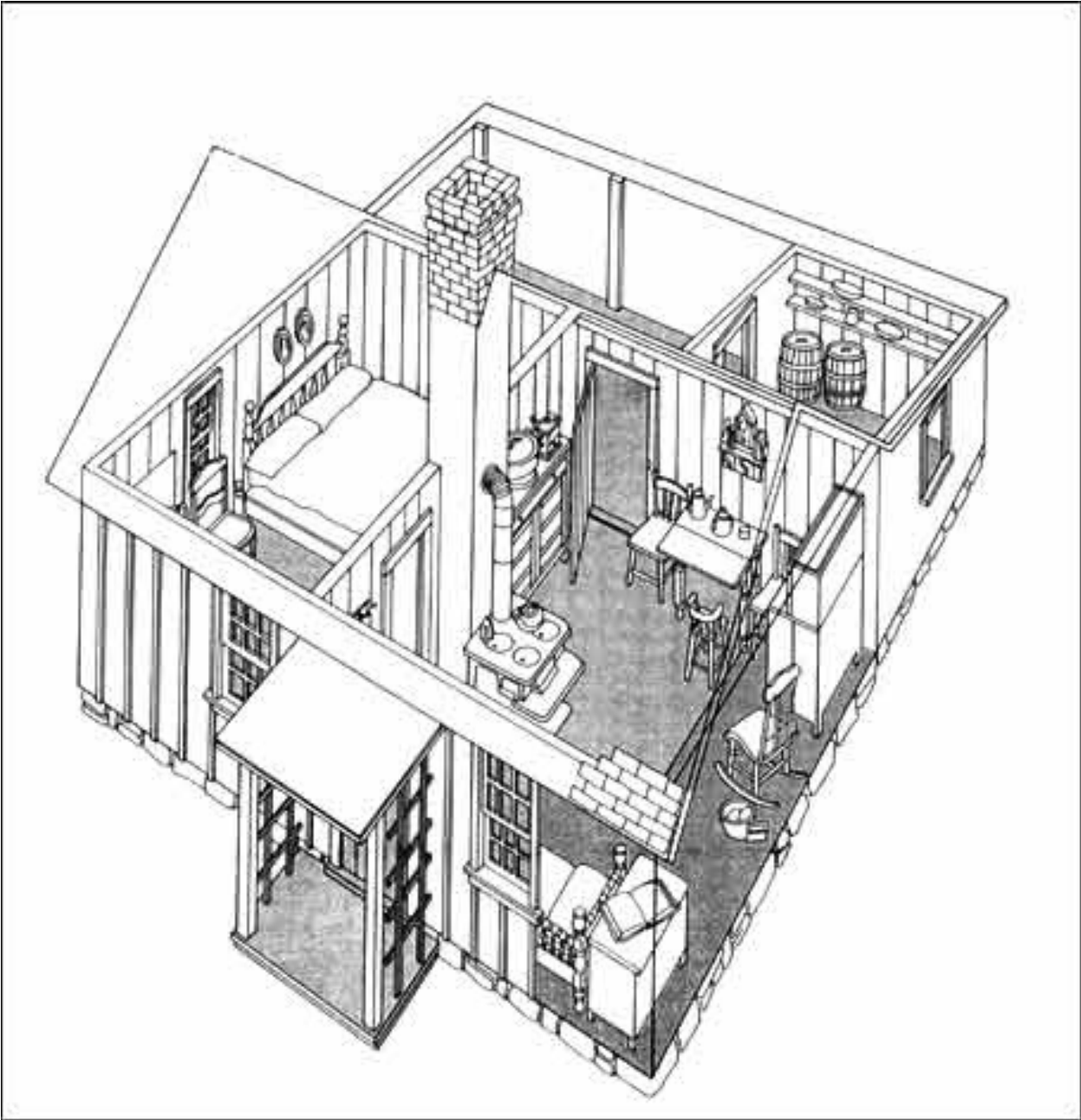


Diagram

Inside the Birthplace



Diagram

Description

This schematic shows the interior of the cottage in which Herbert Hoover was born. The furnishings approximate what the Hoover family would have had in their home. A room on the left of the main part of the house shows a bed. The room on the right has chairs, a table, a stove, cupboard, and a couch. There is a porch in the back with an enclosed space on the right with flour barrels.

Hoover's father and grandfather built the cottage, which measured 14 ft. x 20 ft. Hoover once said about the cottage: "This house where I was born in is physical evidence of the unbounded opportunity of American life."

Diagram

Reflect

1. One observer described Hoover's birthplace as "modest but pleasant." Do you agree with that description? Why or why not?

2. Based on what you can see, describe how the Hoover family used the space in their cottage.

Connect and Predict

1. Measure out a 14' by 20' space in the classroom or school yard. What do you think it would have been like for a family of five to live in a space this size? How might a family use such a space today?

2. List some questions you have about the house for the park ranger during your visit.