

W
A
S
H
I
N
G
T
O
N

Handwriting practice lines consisting of ten horizontal blue lines, each corresponding to a letter in the name 'WASHINGTON'.



C
O
R
N
W
A
L
L
I
S



C

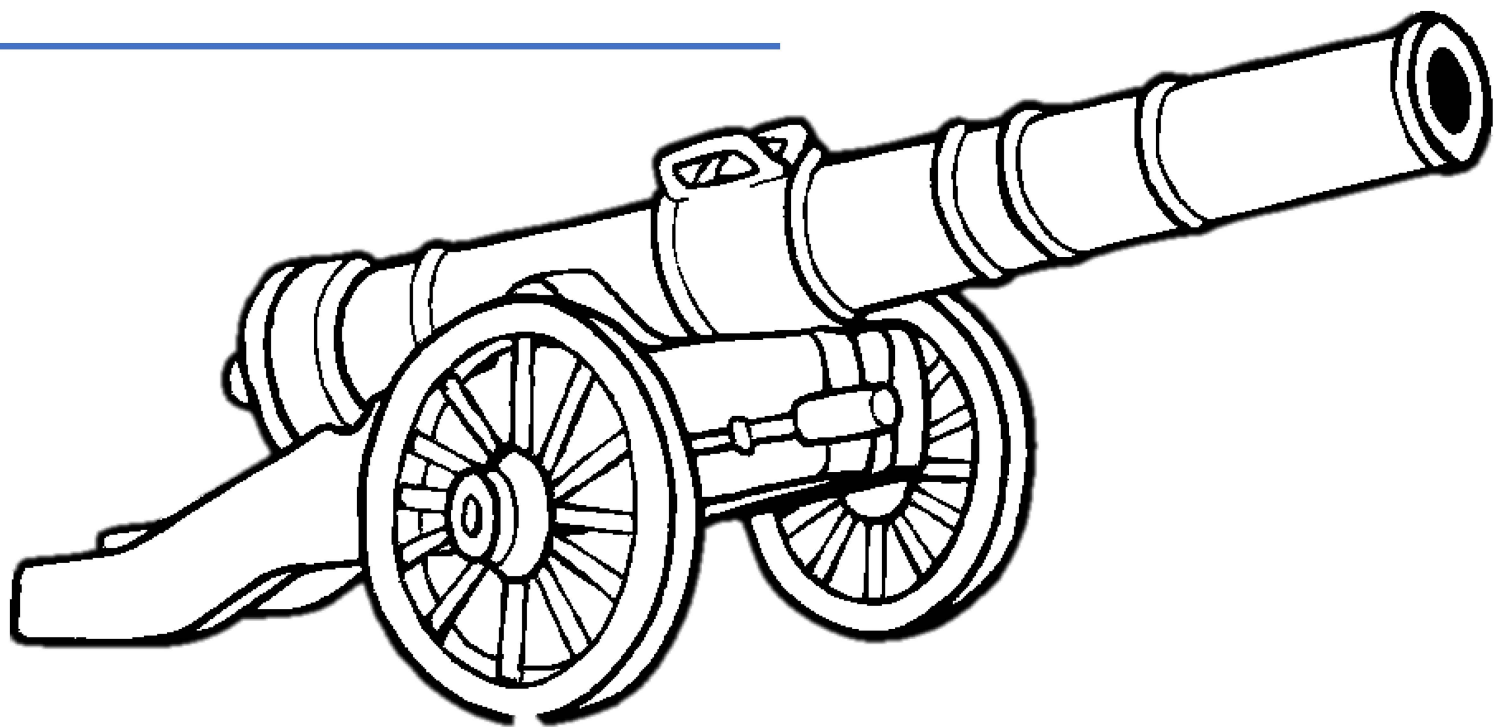
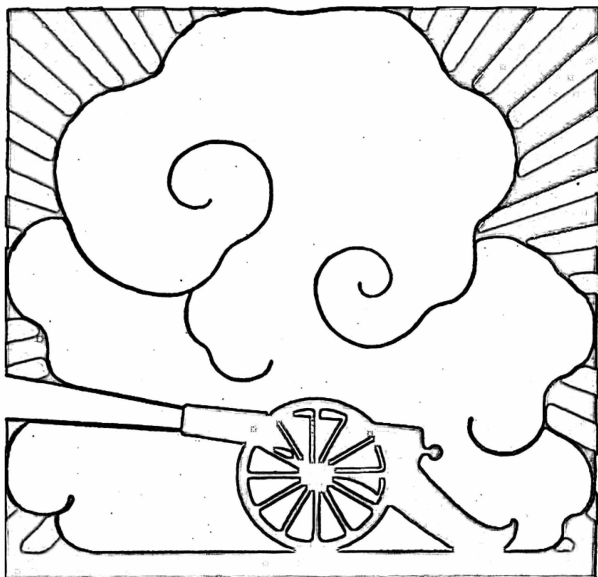
A

N

N

O

N



M

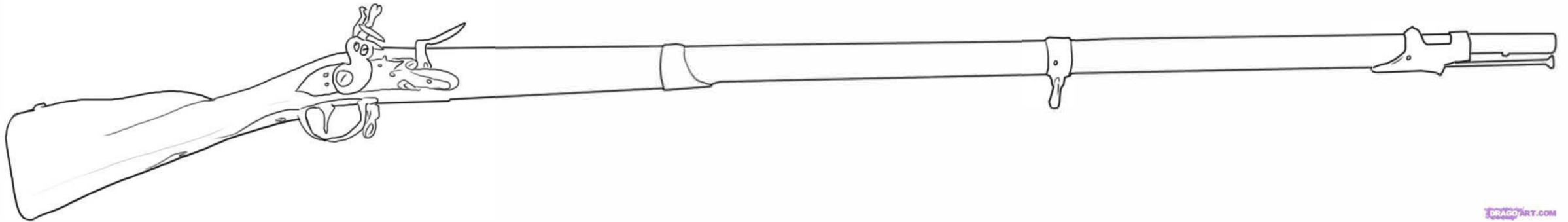
U

S

K

E

T



R

E

D

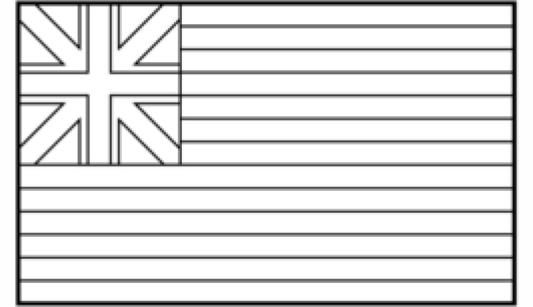
O

U

B

T

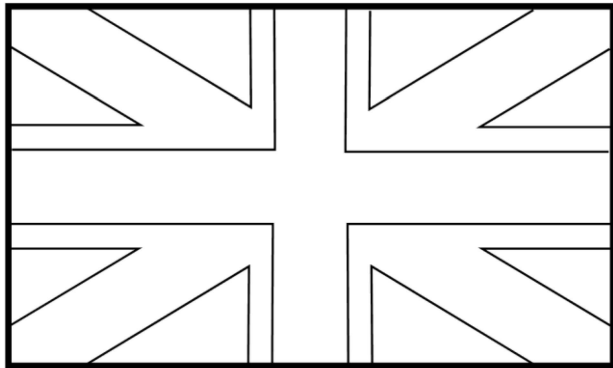
REVOLUTIONARY WAR



GRAND UNION FLAG
1st National Flag - 1775-1777
Also known as
The Continental Colors, the Congress Flag



B
R
I
T
I
S
H



Great Britain

BRITISH RED COAT



F
R
E
N
C
H

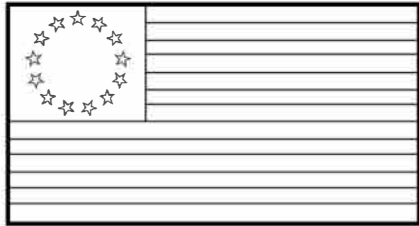
Handwriting practice lines consisting of five horizontal blue lines extending from the letters 'F' through 'H' to the right.

--	--	--

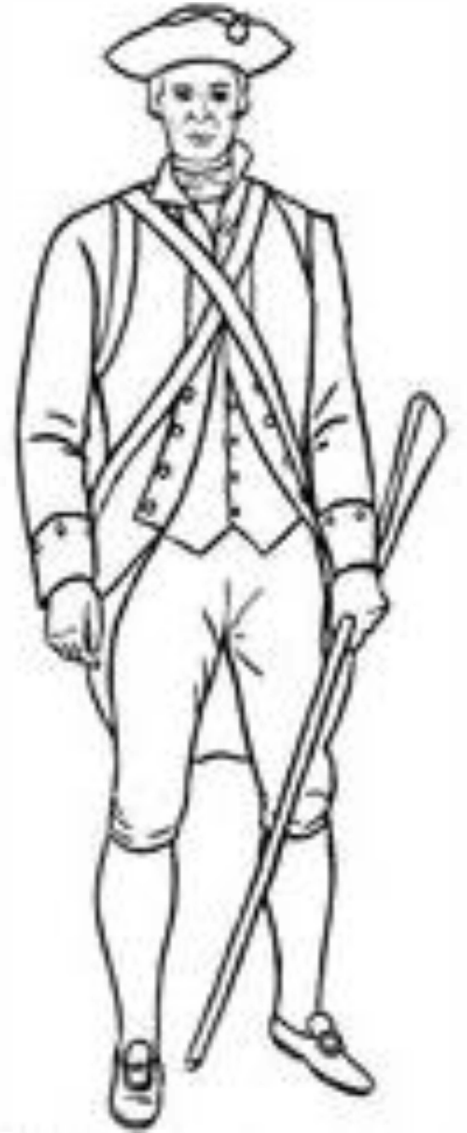
France



C
O
L
O
N
I
A
L



*United States
1776*



G

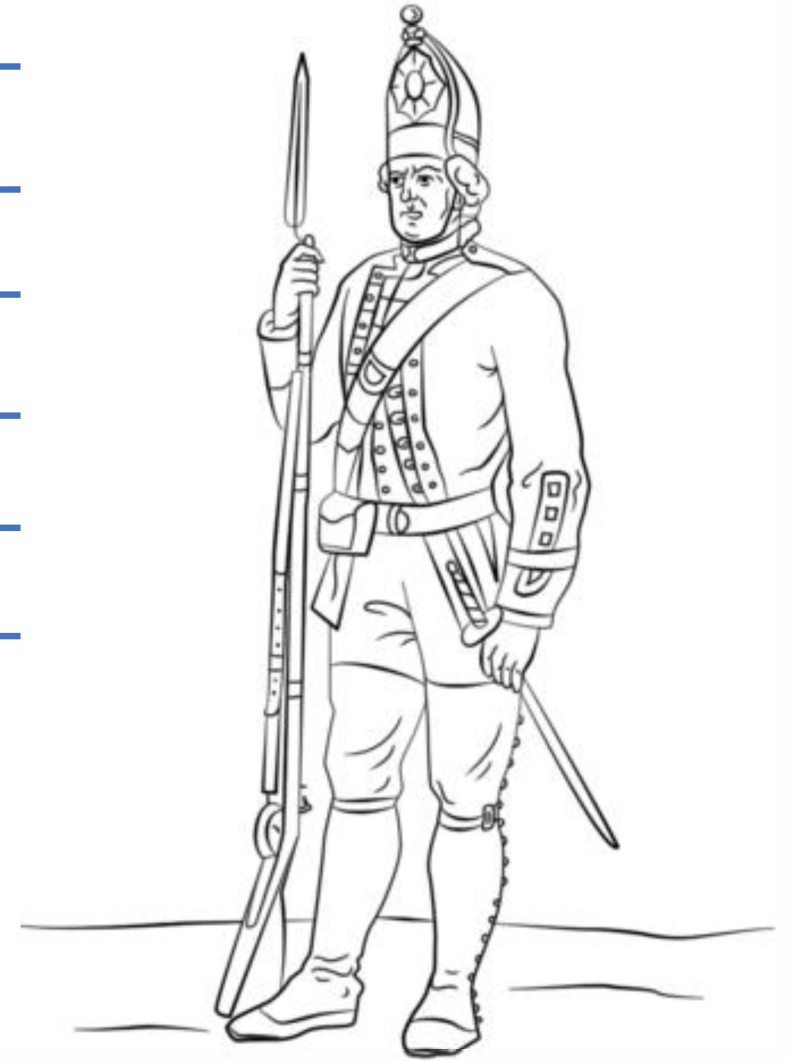
E

R

M

A

N



B

A

T

T

L

E

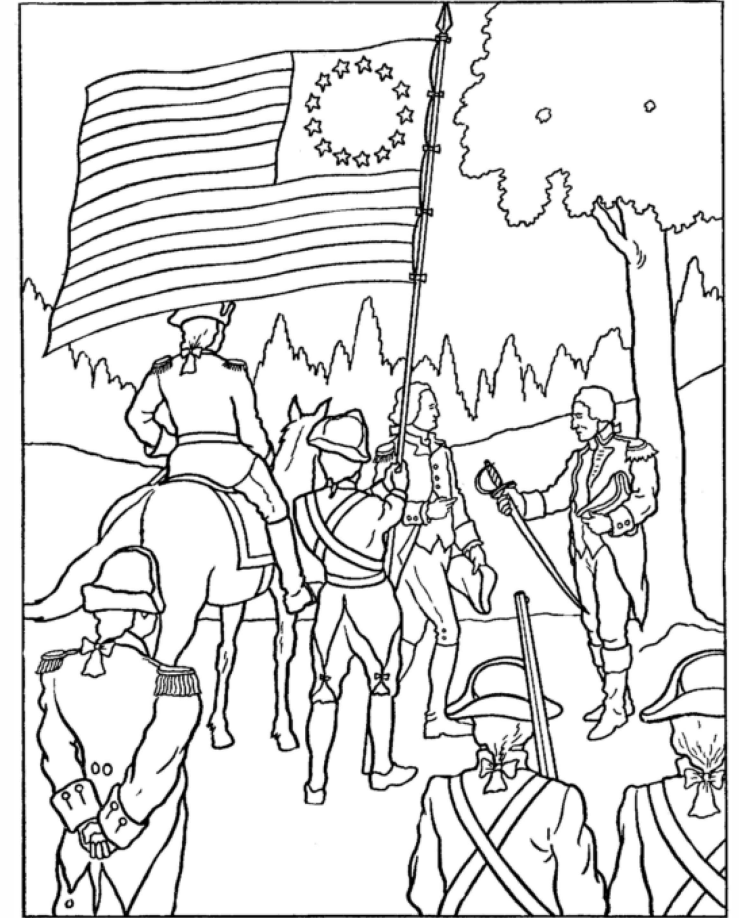
F

I

E

L

D



Surrender of Cornwallis at Yorktown