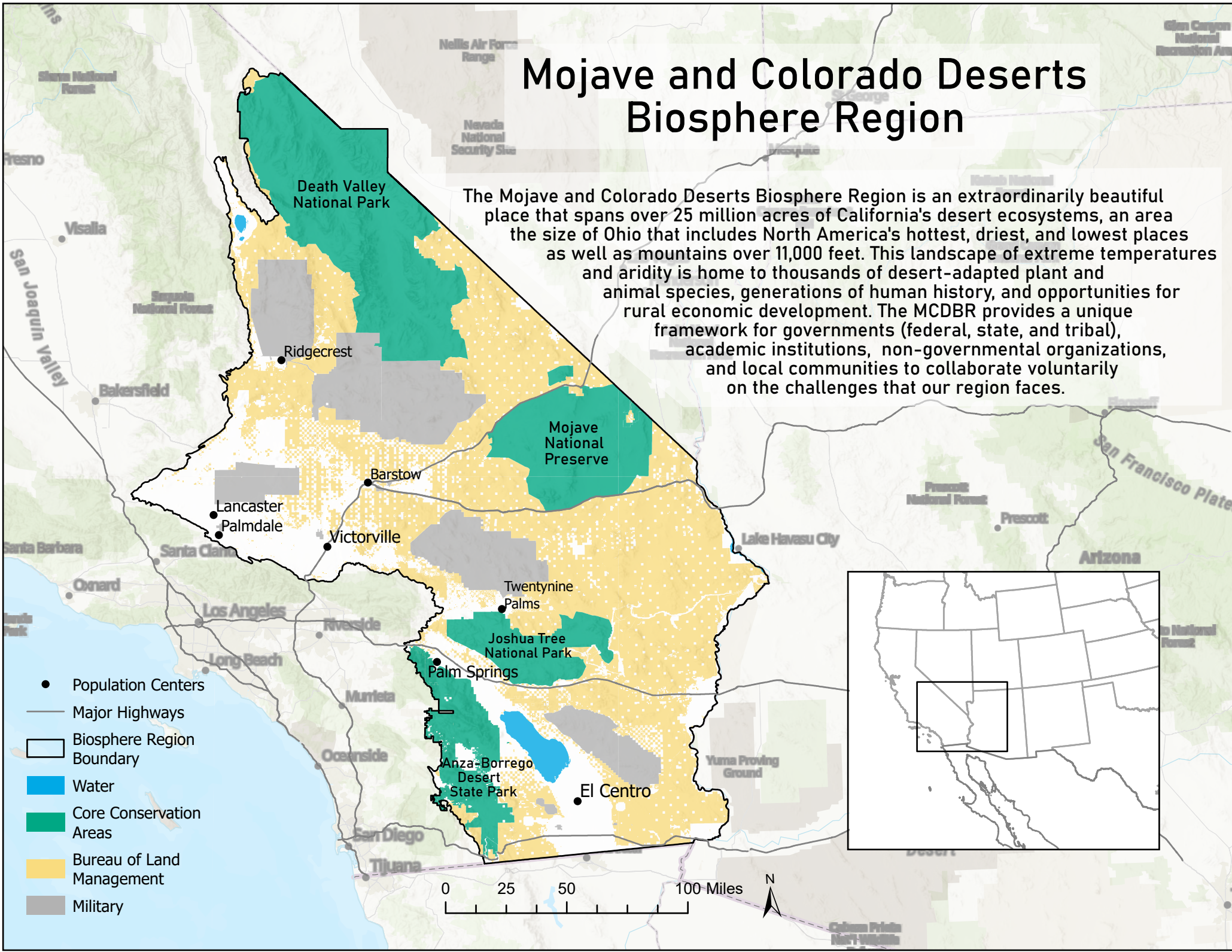


Mojave and Colorado Deserts Biosphere Region

The Mojave and Colorado Deserts Biosphere Region is an extraordinarily beautiful place that spans over 25 million acres of California's desert ecosystems, an area the size of Ohio that includes North America's hottest, driest, and lowest places as well as mountains over 11,000 feet. This landscape of extreme temperatures and aridity is home to thousands of desert-adapted plant and animal species, generations of human history, and opportunities for rural economic development. The MCDBR provides a unique framework for governments (federal, state, and tribal), academic institutions, non-governmental organizations, and local communities to collaborate voluntarily on the challenges that our region faces.



- Population Centers
- Major Highways
- Biosphere Region Boundary
- Water
- Core Conservation Areas
- Bureau of Land Management
- Military

