

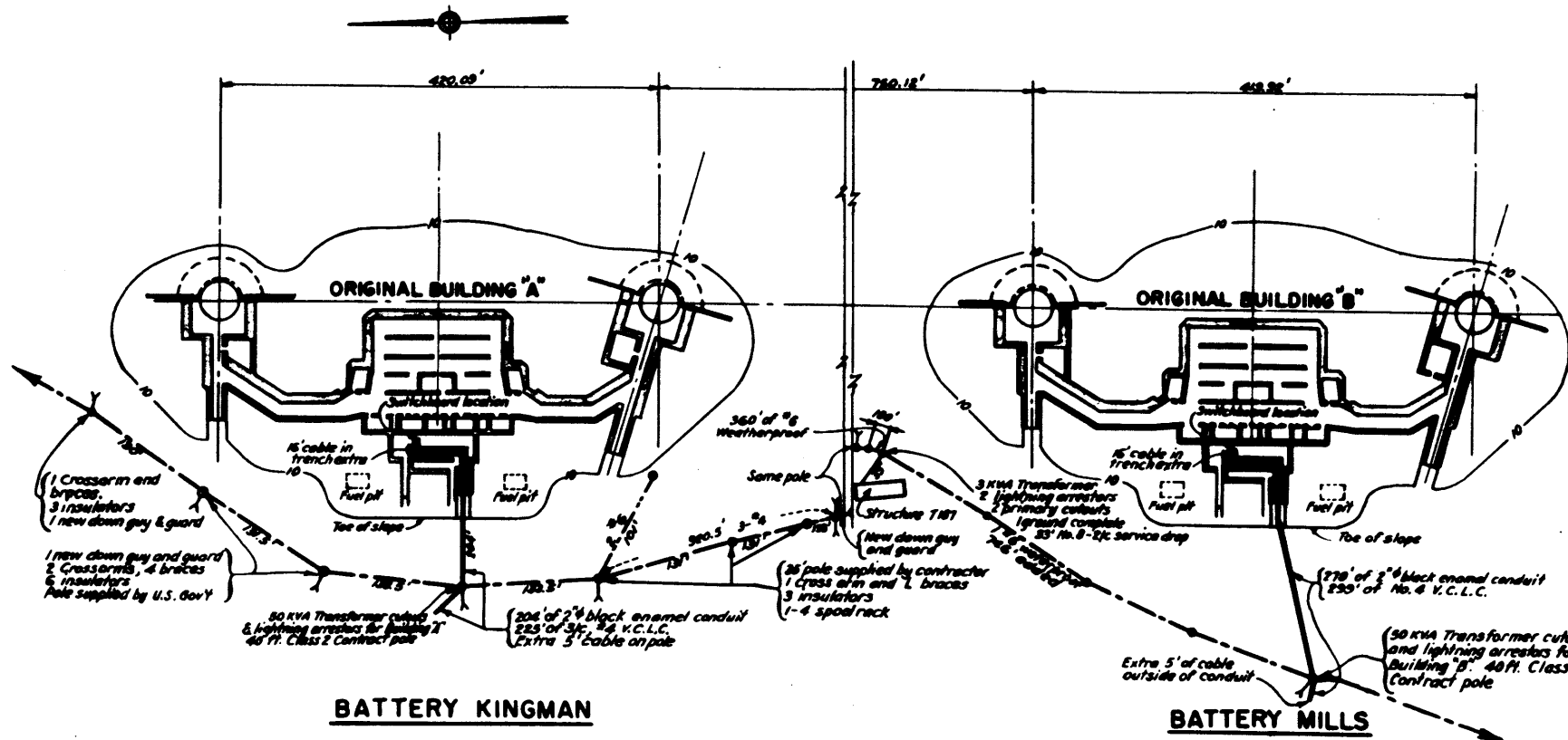
SECRET

HARBOR DEFENSES OF NEW YORK

BATTERY MILLS

CASEMATES & POWER ROOM

FT. HANCOCK NEW JERSEY



BATTERY KINGMAN

BATTERY MILLS

GENERAL PLAN

LEGEND

- 3 # 3 wire primary
- 1 # 2 wire primary 2300 Volt
- Original pole
- Conduit
- New location of pole
- ⌋ Pole guy wire
- V.C.L.C. (Varnish Cambric insulated, Lead covered)

NOTES

Elevations are in Ft. and refer to Mean Low Water Datum. Secondary is 3/c # 4 varnish cambric insulated lead covered cable in conduit to each building. Conduit is 2" # 6. Switchboard is supplied and installed by others. Transformers have 2-2 1/2% primary taps above and below rated voltage. Load in each building is 50 KVA - 3 # 60~450 volts

HARBOR DEFENSES OF NEW YORK
BATTERIES KINGMAN AND MILLS
ELECTRICAL POWER EXTENSION
FORT HANCOCK NEW JERSEY

0 50' 100' 150' 300'