

JURASSIC

Sundance Formation

TRIASSIC

Spearsfish Formation

PERMIAN

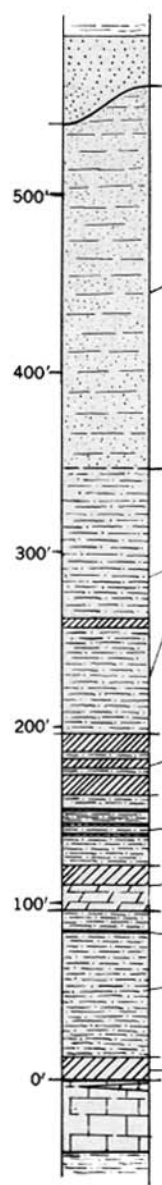
Minnekahta Limestone

Opeche Formation

Upper unit

Middle unit

Lower unit



Sandstone, very fine-grained, brownish-red. Very thin horizontal laminations. Ripple laminated at top. Abundant siltstone laminae

Siltstone and claystone, pinkish-red. Weathers blocky; no lamination observed

White gypsum and interbeds of red siltstone. In places 6 in. dolomite at base. Shown as Psg₃ on plate 20

Red siltstone with persistent 1-foot-thick gypsum beds

Purple to green gypsum. Thinly laminated dolomite at base. Shown as Psg₂ on plate 20

Gypsum and dolomite

Siltstone, red. Grades to weakly crossbedded, very fine grained sandstone at top

White gypsum. Present only locally. Shown as Psg₁ on plate 20