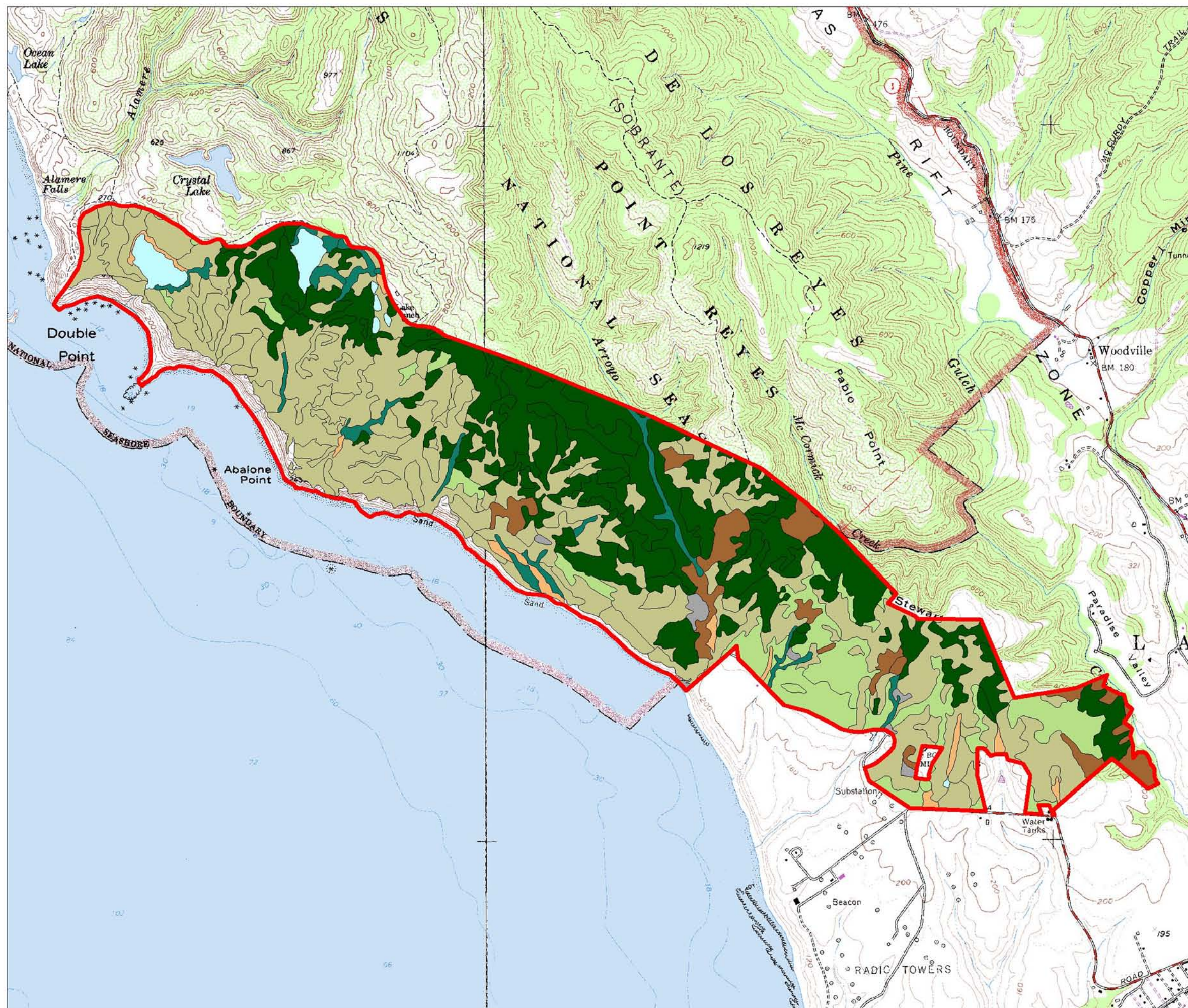


Vegetation in the Palomarin FMU

Point Reyes National Seashore

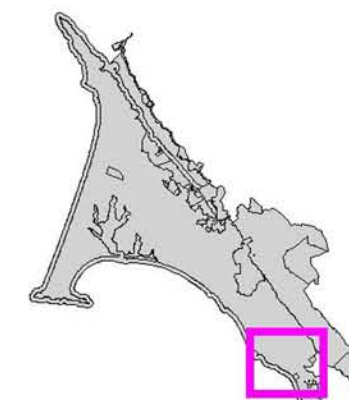


FMU Boundary

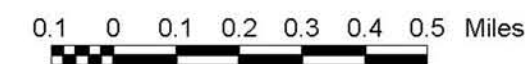
Vegetation Classes and Acreage

	Douglas-fir / Redwood = 624.3
	Grassland = 190.2
	Hardwood Forest = 92.2
	Marsh = 25.2
	Monterey Pine/Cypress = 0.08
	Pasture = 0.1
	Riparian = 58.4
	Scrub = 889.0
	Unvegetated = 12.8
	Water = 37.7

Map Location



National Park Service
Point Reyes National Seashore
GIS Team



1 : 37,621 1 inch = 0.59 miles

