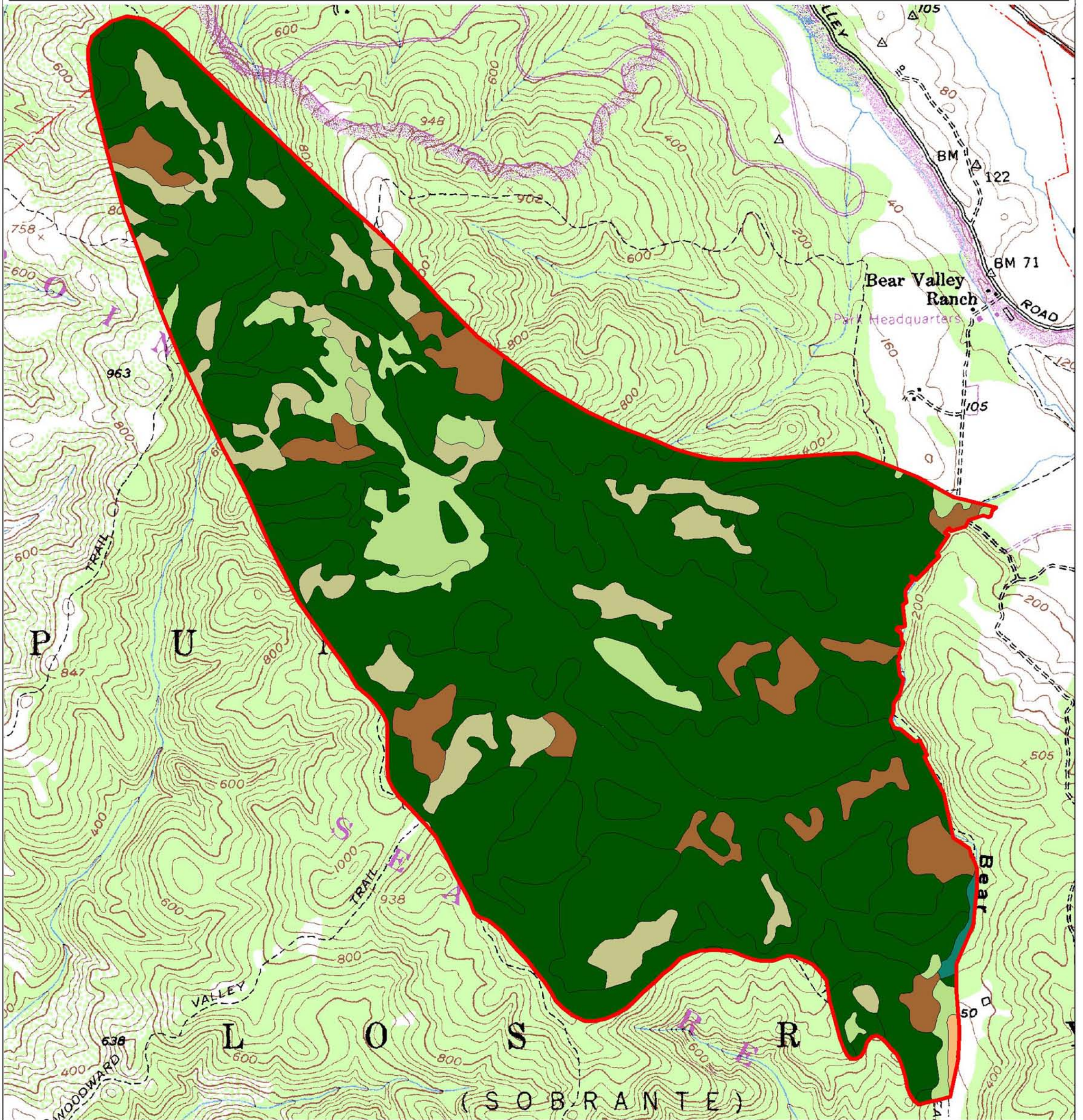


Vegetation in Wilderness North FMU

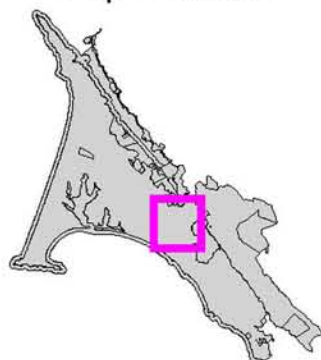
Point Reyes National Seashore



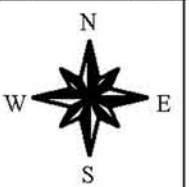
Vegetation Classes and Acreage

	Douglas-fir / Redwood = 1,262.3
	Grassland = 88.4
	Hardwood Forest = 103.5
	Marsh = 2.6
	Riparian = 4.0
	Scrub = 130.6
	FMU Boundary

Map Location



National Park Service
Point Reyes National Seashore
GIS Team



0.1 0 0.1 0.2 0.3 0.4 Miles



1 : 28,401 1 inch = 0.45 miles