

**NATIONAL PARK SERVICE**  
**NATIONAL REGISTER OF HISTORIC PLACES/  
NATIONAL HISTORIC LANDMARKS PROGRAM**

# WARNING

THIS FILE CONTAINS INFORMATION THAT IS RESTRICTED FROM PUBLIC ACCESS UNDER LAW (INCLUDING 54 U.S.C. § 307103 [FORMERLY SECTION 304 OF THE NATIONAL HISTORIC PRESERVATION ACT OF 1966, AS AMENDED] AND/OR 16 U.S.C. § 470hh [ARCHAEOLOGICAL RESOURCES PROTECTION ACT OF 1979]).

THIS DOCUMENTATION MAY BE VIEWED OR REPRODUCED ONLY WITH THE PERMISSION OF THE SECRETARY OF THE INTERIOR ACTING THROUGH THE KEEPER OF THE NATIONAL REGISTER OR THEIR AUTHORIZED DESIGNEE.

**X RESTRICTED INFORMATION IN THIS DOCUMENT  
HAS BEEN REDACTED**

**REDACTION DATE 1/16/2024 (IF APPLICABLE)**

**NOTES:**

FILE (PROPERTY) NAME: Calumet Historic District NHL

LOCATION (STATE/TERRITORY): Michigan

LOCATION (COUNTY/PARISH): Houghton County

NRIS#: 74000985

**CALUMET HISTORIC DISTRICT NATIONAL HISTORIC LANDMARK****Photos/Figures/Maps**

United States Department of the Interior, National Park Service

National Historic Landmarks Nomination Form

## Map Log

Map 1: Calumet Historic District NHL within the Keweenaw Peninsula

Map 1a: Inset of regional location from Freeworldmaps.net

Map 2: Northern boundary and Lat/Long point of the Calumet Historic District NHL shown in red on USGS Topographic Map, Ahmeek Quadrangle 7.5 Minute Map

Map 3: Majority of Calumet Historic District NHL boundary and Lat/Long points shown in red on USGS Topographic Map, Laurium Quadrangle 7.5 Minute Map

Map 4: Map S-1 Overall District, with the revised NHL boundary, the 1989 NHL boundary, the Keweenaw National Historical Park boundary, all Landscape Character Areas, and Lat/Long points.

Map 5: Map H-1 Housing Location, with the revised NHL boundary, the 1989 boundary, the Keweenaw National Historical Park boundary, and historic housing locations.

Map 6: Map of Landscape Character Areas A (North), B and C with the revised NHL boundary, the 1989 boundary, the Keweenaw National Historical Park boundary, and historic housing locations.

Map 7: Map of Landscape Character Area A (South), with the revised NHL boundary, the 1989 boundary, the Keweenaw National Historical Park boundary, and historic housing locations.

Map 8: Map of Landscape Character Areas D and F with the revised NHL boundary, the 1989 boundary, the Keweenaw National Historical Park boundary, and historic housing locations.

Map 9: Map of Landscape Character E with the revised NHL boundary, the 1989 boundary, the Keweenaw National Historical Park boundary, and historic housing locations.

Map 10: Map of Landscape Character Areas G and H with the revised NHL boundary, the 1989 boundary, the Keweenaw National Historical Park boundary, and historic housing locations.

## Photo Log

Calumet Historic District

Village of Calumet

Houghton County, MI

All photos by Quinn Evans Architects, August 2018

TIFF images on file with NPS in Washington, DC

Photo 1 of 56

Calumet and Hecla Mine Industrial and Management Core Landscape Character Area A. View to northwest along Red Jacket Road at US-41/Calumet Avenue intersection.

Photo 2 of 56

DRAFT

Calumet and Hecla Mine Industrial and Management Core Landscape Character Area A. View to northwest along Red Jacket Road and Mine Street intersection.

Photo 3 of 56

Calumet and Hecla Mine Industrial and Management Core Landscape Character Area A. View to northwest along Red Jacket Road towards Fifth Street.

Photo 4 of 56

Calumet and Hecla Mine Industrial and Management Core Landscape Character Area A. View to the south north of Red Jacket Road.

Photo 5 of 56

Calumet and Hecla Mine Industrial and Management Core Landscape Character Area A. View to the south along Mine Street at Red Jacket Road intersection.

Photo 6 of 56

Calumet and Hecla Mine Industrial and Management Core Landscape Character Area A. View to the north along Mine Street, from the Sixth Street Extension intersection.

Photo 7 of 56

Calumet and Hecla Mine Industrial and Management Core Landscape Character Area A. View to the southwest, south of Red Jacket Road, towards the Sixth Street Extension.

Photo 8 of 56

Calumet and Hecla Mine Industrial and Management Core Landscape Character Area A. View to the northeast towards Red Jacket Road.

Photo 9 of 56

Calumet and Hecla Mine Industrial and Management Core Landscape Character Area A. View to the north from Mine Street towards Red Jacket Road.

Photo 10 of 56

Calumet and Hecla Mine Industrial and Management Core Landscape Character Area A. View to the east the Sixth Street Extension.

Photo 11 of 56

Calumet and Hecla Mine Industrial and Management Core Landscape Character Area A. View to the north from Mine Street.

Photo 12 of 56

Calumet and Hecla Mine Industrial and Management Core Landscape Character Area A. View to the northeast from Mine Street.

Photo 13 of 56

Calumet and Hecla Mine Industrial and Management Core in Landscape Character Area A, view of the former Hecla No. 7 mining landscape.

Photo 14 of 56

DRAFT

Calumet Housing Location in Landscape Character Area B. View to the north along US-41 / Calumet Avenue.

Photo 15 of 56

Calumet Housing Location in Landscape Character Area B. View to the northeast along US-41 / Calumet Avenue.

Photo 16 of 56

Agassiz Park in Landscape Character Area C. View to the northwest towards Oak and Fourth streets intersection.

Photo 17 of 56

Agassiz Park in Landscape Character Area C. View to the west towards Portland and Fourth streets intersection.

Photo 18 of 56

Agassiz Park in Landscape Character Area C. View to the southeast from Fourth Street towards the Calumet and Hecla Mine Industrial and Management Core Landscape Character Area A.

Photo 19 of 56

Agassiz Park in Landscape Character Area C. View to the west toward Fourth Street.

Photo 20 of 56

Temple Square in the Civic Core Landscape Character Area D. View to the north along Sixth Street at Armory Drive intersection.

Photo 21 of 56

Temple Square in the Civic Core Landscape Character Area D. View to the northwest from Armory Drive.

Photo 22 of 56

Civic Core Landscape Character Area D. View to the north along Fifth Street at Oak Street intersection.

Photo 23 of 56

Civic Core Landscape Character Area D. View to the south along Fifth Street at Oak Street intersection.

Photo 24 of 56

Civic Core Landscape Character Area D. View to the south along Fifth Street towards Elm Street intersection.

Photo 25 of 56

Civic Core Landscape Character Area D. View to the south along Sixth Street towards Elm Street intersection.

Photo 26 of 56

View to the Civic Core Landscape Character Area D, from the Village of Calumet Housing Landscape Character Area F. View to the east along Elm Street at Seventh Street intersection.

Photo 27 of 56

View to the Civic Core Landscape Character Area D, from the Village of Calumet Housing Landscape Character Area F. View to the east along Oak Street towards Seventh Street intersection.

Photo 28 of 56

Civic Core Landscape Character Area D. View to the west along Oak Street at the Fourth Street intersection.

DRAFT

**CALUMET HISTORIC DISTRICT NATIONAL HISTORIC LANDMARK****Photos/Figures/Maps**

United States Department of the Interior, National Park Service

National Historic Landmarks Nomination Form

Photo 29 of 56

Blue Jacket Housing Location, Landscape Character Area E. View to the northwest along Elm Street at the Fourth Street intersection.

Photo 30 of 56

Blue Jacket Housing Location Landscape Character Area E. View to the west along Cedar Street to the Fourth Street intersection.

Photo 31 of 56

Blue Jacket Housing Location Landscape Character Area E. View to the north along Fourth Street at the Cedar Street intersection.

Photo 32 of 56

Blue Jacket Housing Location Landscape Character Area E. View to the north along Waterworks Street.

Photo 33 of 56

Village of Calumet Housing Location Landscape Character Area F. View to the southwest along Sixth Street at the Pine Street intersection.

Photo 34 of 56

Village of Calumet Housing Location Landscape Character Area F. View to the northwest at the intersection of Seventh and Scott streets.

Photo 35 of 56

Village of Calumet Housing Location Landscape Character Area F. View to the south along Seventh Street at the Portland Street intersection.

Photo 36 of 56

Village of Calumet Housing Location Landscape Character Area F. View to the southeast along Seventh Street at the Elm Street intersection.

Photo 37 of 56

Village of Calumet Housing Location Landscape Character Area F, Italian Hall memorial.

Photo 38 of 56

Village of Calumet Housing Location Landscape Character Area F. View to the south along Eight Street at Elm Street intersection.

Photo 39 of 56

Village of Calumet Housing Location Landscape Character Area F. View to the northeast along Eight Street at Elm Street intersection.

Photo 40 of 56

Village of Calumet Housing Location Landscape Character Area F. View to the northwest along Eight Street between Elm and Pine streets.

Photo 41 of 56

**DRAFT**

**CALUMET HISTORIC DISTRICT NATIONAL HISTORIC LANDMARK****Photos/Figures/Maps**

United States Department of the Interior, National Park Service

National Historic Landmarks Nomination Form

Village of Calumet Housing Location Landscape Character Area F. View to the north along Ninth Street at Oak Street intersection.

Photo 42 of 56

Yellow Jacket Housing Location Landscape Character Area G. View to the west along Oak Street at the Ninth Street intersection.

Photo 43 of 56

Yellow Jacket Housing Location Landscape Character Area G. View to the northwest along Tenth Street at the Oak Street intersection.

Photo 44 of 56

Yellow Jacket Housing Location Landscape Character Area G. View to the southwest along Oak Street across the Eleventh Street intersection.

Photo 45 of 56

Yellow Jacket Housing Location Landscape Character Area G. View to the east along Portland Street across the Tenth Street intersection.

Photo 46 of 56

Yellow Jacket Housing Location Landscape Character Area G. View to the southeast along Elm Street at the Tenth Street intersection.

Photo 47 of 56

Yellow Jacket Housing Location Landscape Character Area G. Worker housing along Tenth Street (right to left: Map ID#s 567 to 563). View to the southwest along Tenth Street at the Pine Street intersection.

Photo 48 of 56

Yellow Jacket Housing Location Landscape Character Area G. View to the north along Eleventh Street at the Oak Street intersection.

Photo 49 of 56

Yellow Jacket Housing Location Landscape Character Area G. View to the north from Oak Street.

Photo 50 of 56

Tamarack Housing Location Landscape Character Area H. View to the west along Maple Street at the 1st Street intersection.

Photo 51 of 56

Tamarack Housing Location Landscape Character Area H. View to the south along 1st Street at the Maple Street intersection.

Photo 52 of 56

Tamarack Housing Location Landscape Character Area H. View to the west along Ash Street at the 1st Street intersection.

Photo 53 of 56

Tamarack Housing Location Landscape Character Area H. View to the northwest along Elm Street at the 1st Street intersection.

DRAFT

**CALUMET HISTORIC DISTRICT NATIONAL HISTORIC LANDMARK**

**Photos/Figures/Maps**

United States Department of the Interior, National Park Service

National Historic Landmarks Nomination Form

---

Photo 54 of 56

Tamarack Housing Location Landscape Character Area H. View to the southwest along Elm Street at the 1st Street intersection.

Photo 55 of 56

Tamarack Housing Location Landscape Character Area H. View to the southeast to Elm Street, across the Mineral Range Railroad Corridor, from 2nd St.

Photo 56 of 56

Tamarack Housing Location Landscape Character Area H. View to the northeast to Ash Street across the Mineral Range Railroad Corridor, from 2nd Street.

DRAFT



# CALUMET HISTORIC DISTRICT NATIONAL HISTORIC LANDMARK

# Photos/Figures/Maps

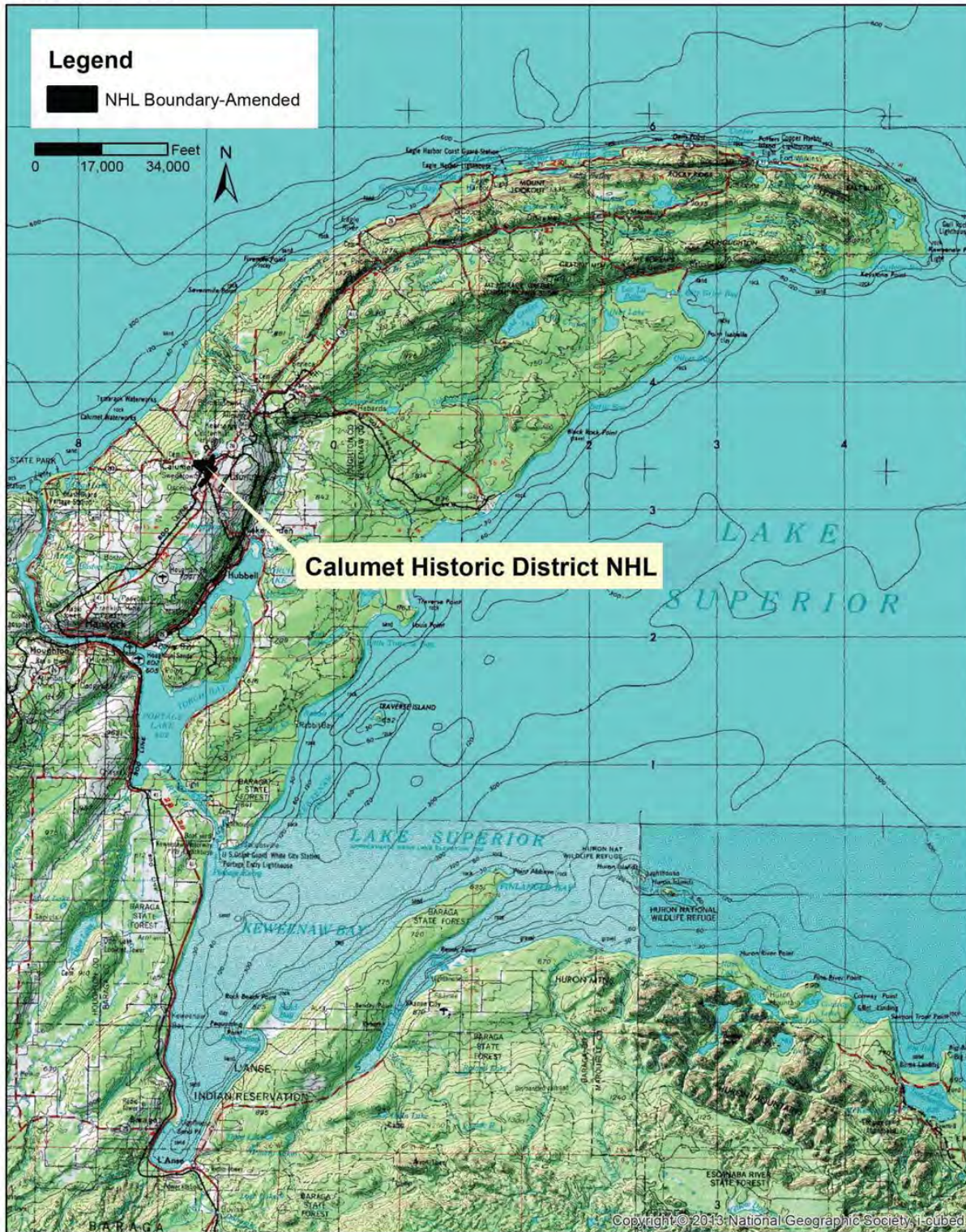
United States Department of the Interior, National Park Service

National Historic Landmarks Nomination Form

## Calumet Historic District National Historic Landmark Nomination Amendment

U.S. Topographic Map of Vicinity

Keweenaw Peninsula



Map 1: Calumet Historic District NHL within the Keweenaw Peninsula

# DRAFT



**CALUMET HISTORIC DISTRICT NATIONAL HISTORIC LANDMARK**

**Photos/Figures/Maps**

United States Department of the Interior, National Park Service

National Historic Landmarks Nomination Form



Map 1a: Inset of regional location from Freeworldmaps.net

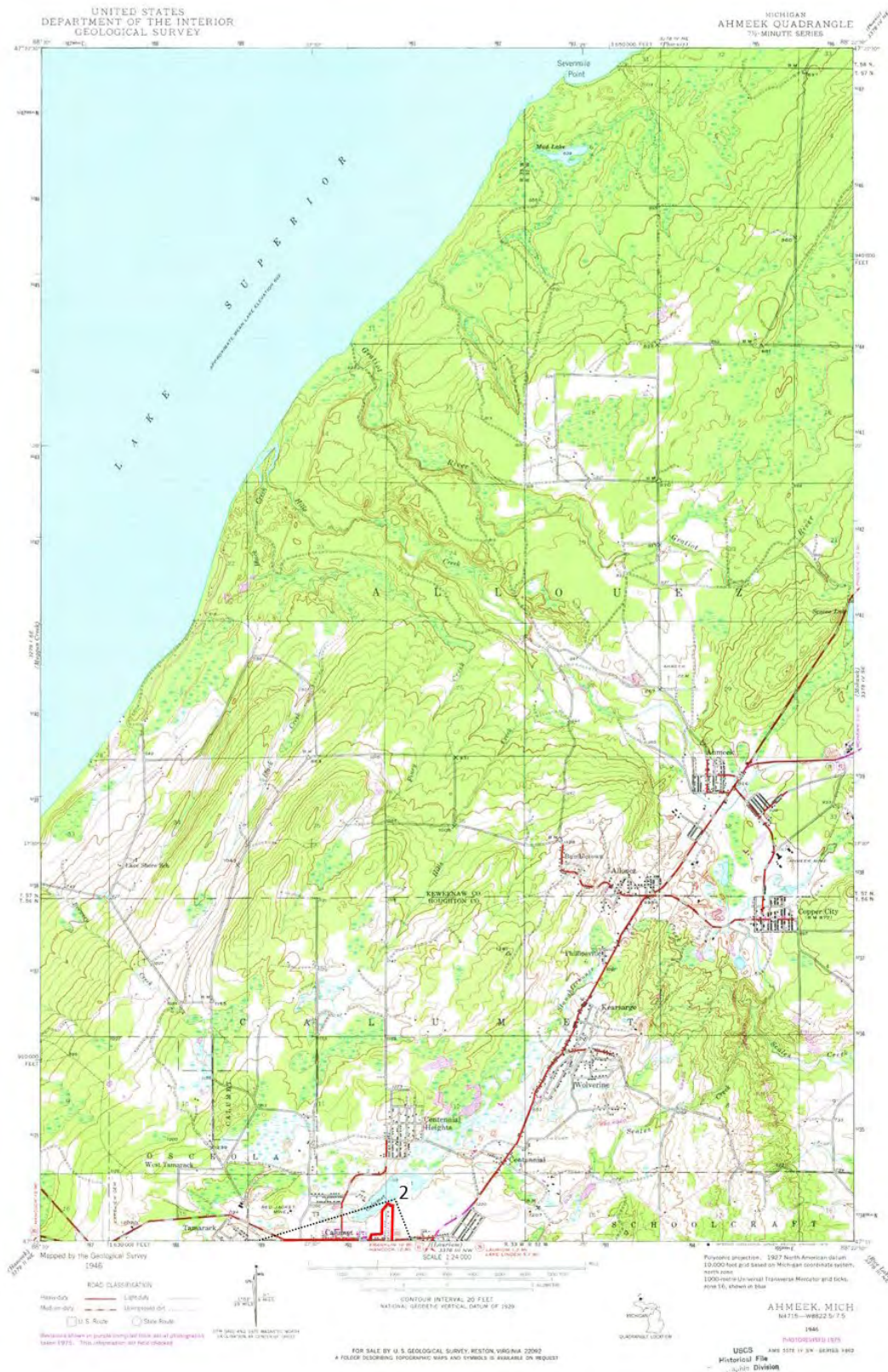
DRAFT

# CALUMET HISTORIC DISTRICT NATIONAL HISTORIC LANDMARK

# Photos/Figures/Maps

United States Department of the Interior, National Park Service

National Historic Landmarks Nomination Form



Map 2: Northern boundary and Lat/Long point of the Calumet Historic District NHL shown in red on USGS. Topographic Map, Ahmeek Quadrangle 7.5 Minute Map

# DRAFT

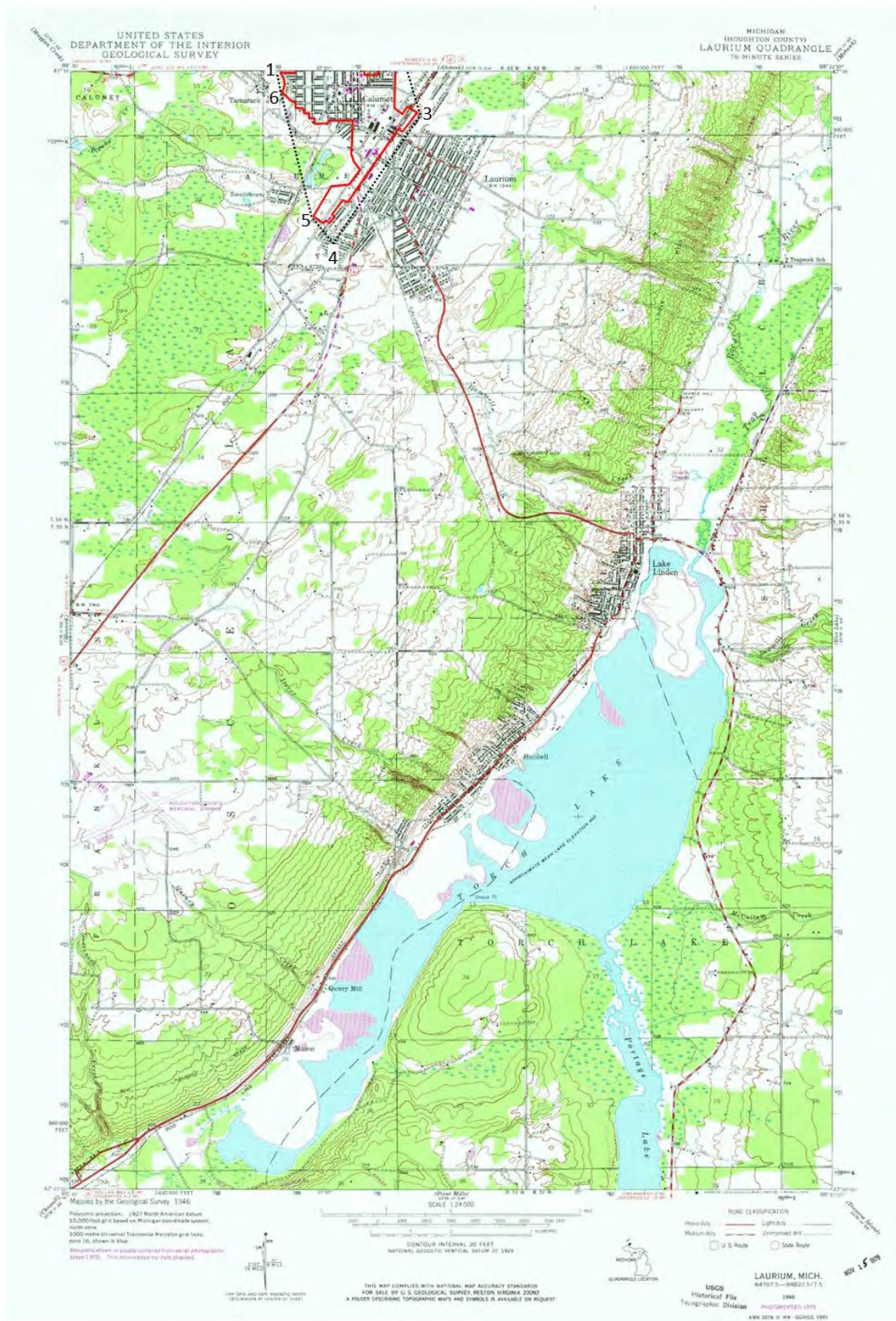


# CALUMET HISTORIC DISTRICT NATIONAL HISTORIC LANDMARK

# Photos/Figures/Maps

United States Department of the Interior, National Park Service

National Historic Landmarks Nomination Form



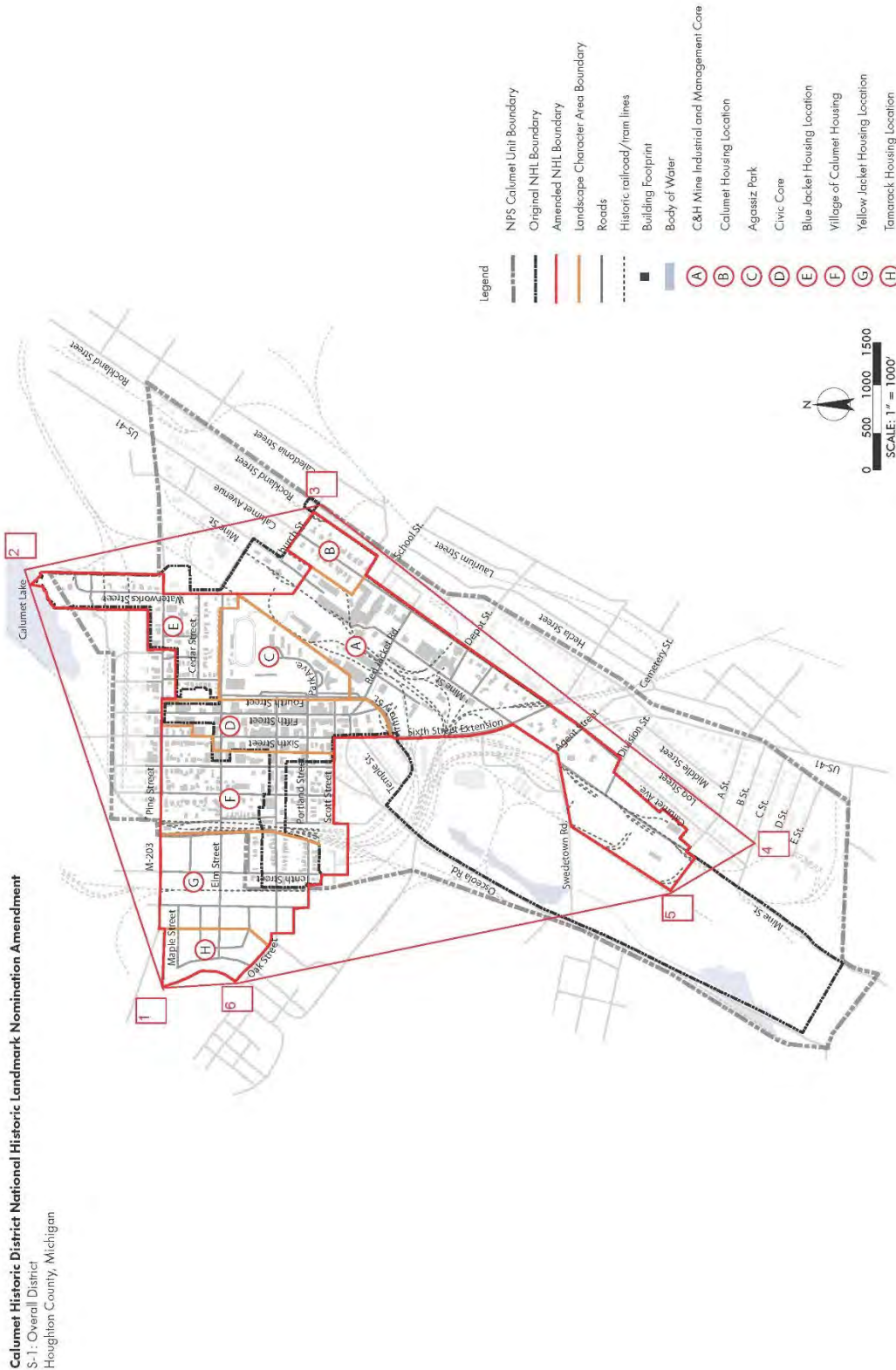
Map 3: Majority of Calumet Historic District NHL boundary and Lat/Long points shown in red on USGS Topographic Map, Laurium Quadrangle 7.5 Minute Map

# CALUMET HISTORIC DISTRICT NATIONAL HISTORIC LANDMARK

## Photos/Figures/Maps

United States Department of the Interior, National Park Service

National Historic Landmarks Nomination Form



Map 4: Map S-1 Overall District, with the revised NHL boundary, the 1989 NHL boundary, the Keweenaw National Historical Park boundary, all Landscape Character Areas, and Lat/Long points.

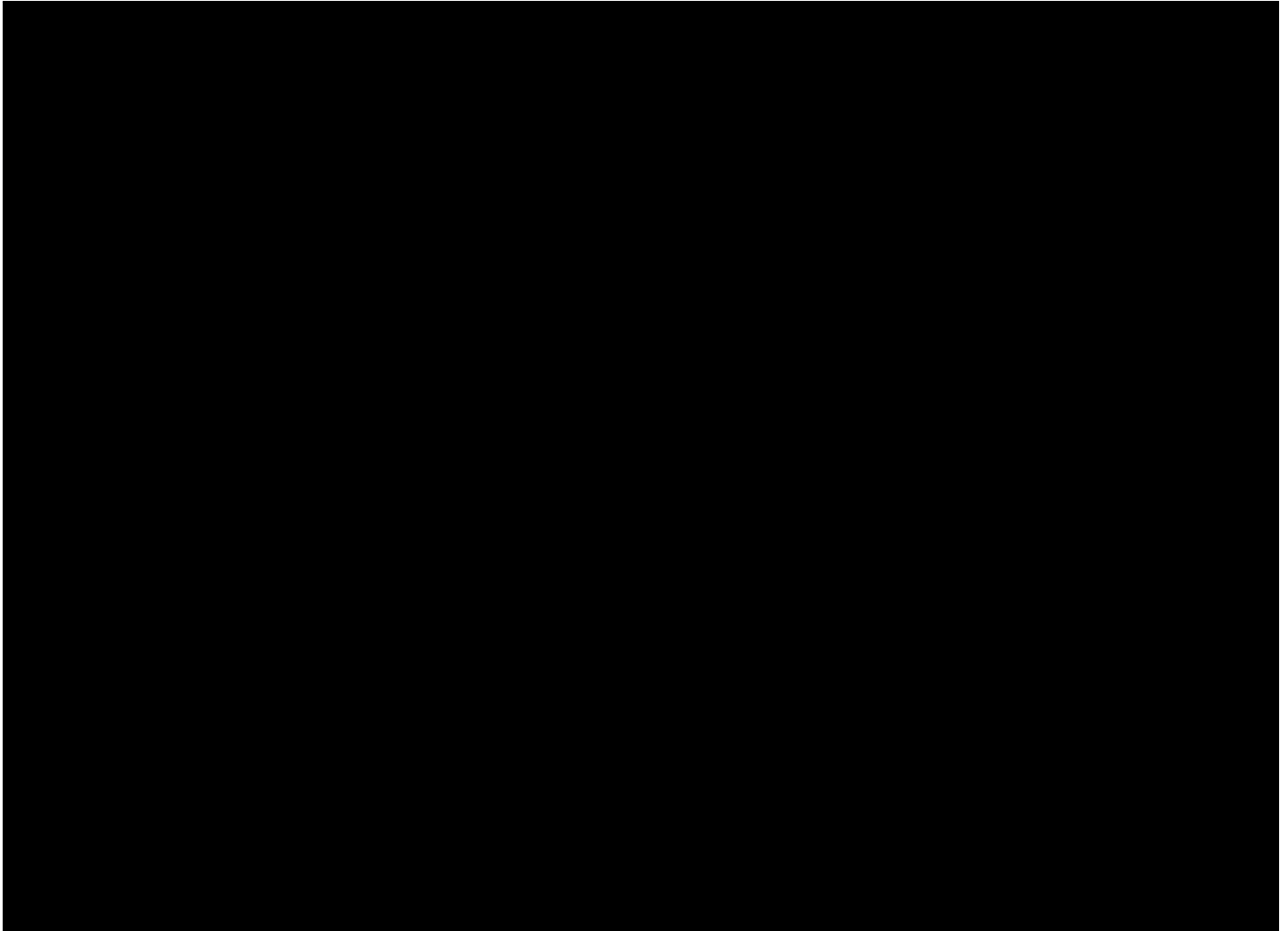
DRAFT

**CALUMET HISTORIC DISTRICT NATIONAL HISTORIC LANDMARK**

**Photos/Figures/Maps**

United States Department of the Interior, National Park Service

National Historic Landmarks Nomination Form



Map 5: Map H-1 Housing Locations, with the revised NHL boundary, the 1989 boundary, the Keweenaw National Historical Park boundary, and historic housing locations.

DRAFT



# CALUMET HISTORIC DISTRICT NATIONAL HISTORIC LANDMARK

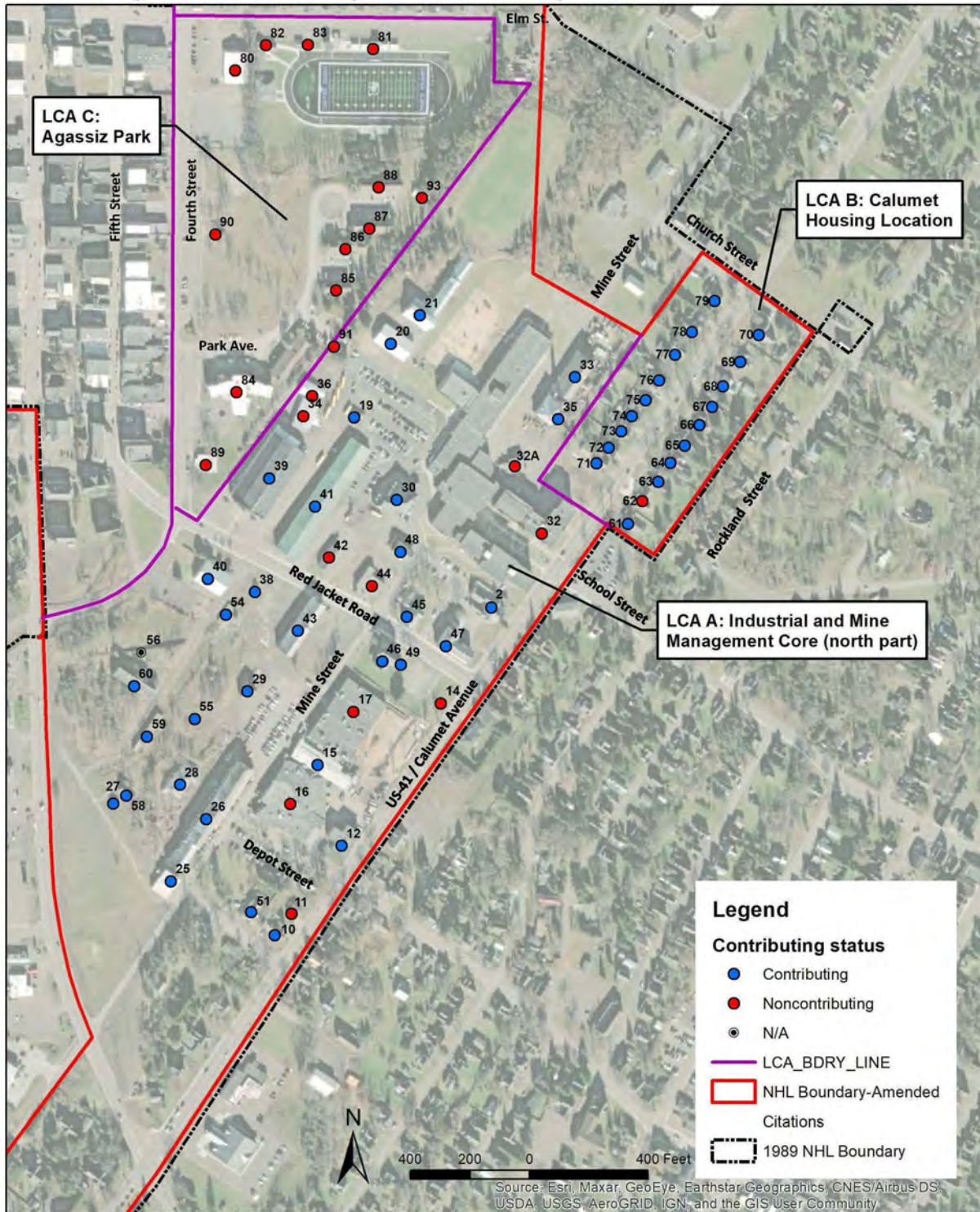
# Photos/Figures/Maps

United States Department of the Interior, National Park Service

National Historic Landmarks Nomination Form

## Calumet Historic District National Historic Landmark Nomination Amendment

LCA A: Industrial and Mine Management Core (north part); LCA B: Calumet Housing Location; and LCA C: Agassiz Park Contributing and Non-Contributing Resources



Map 6: Map of Landscape Character Areas A (North), B and C with the revised NHL boundary, the 1989 boundary, the Keweenaw National Historical Park boundary, and historic housing locations.

# DRAFT



# CALUMET HISTORIC DISTRICT NATIONAL HISTORIC LANDMARK

# Photos/Figures/Maps

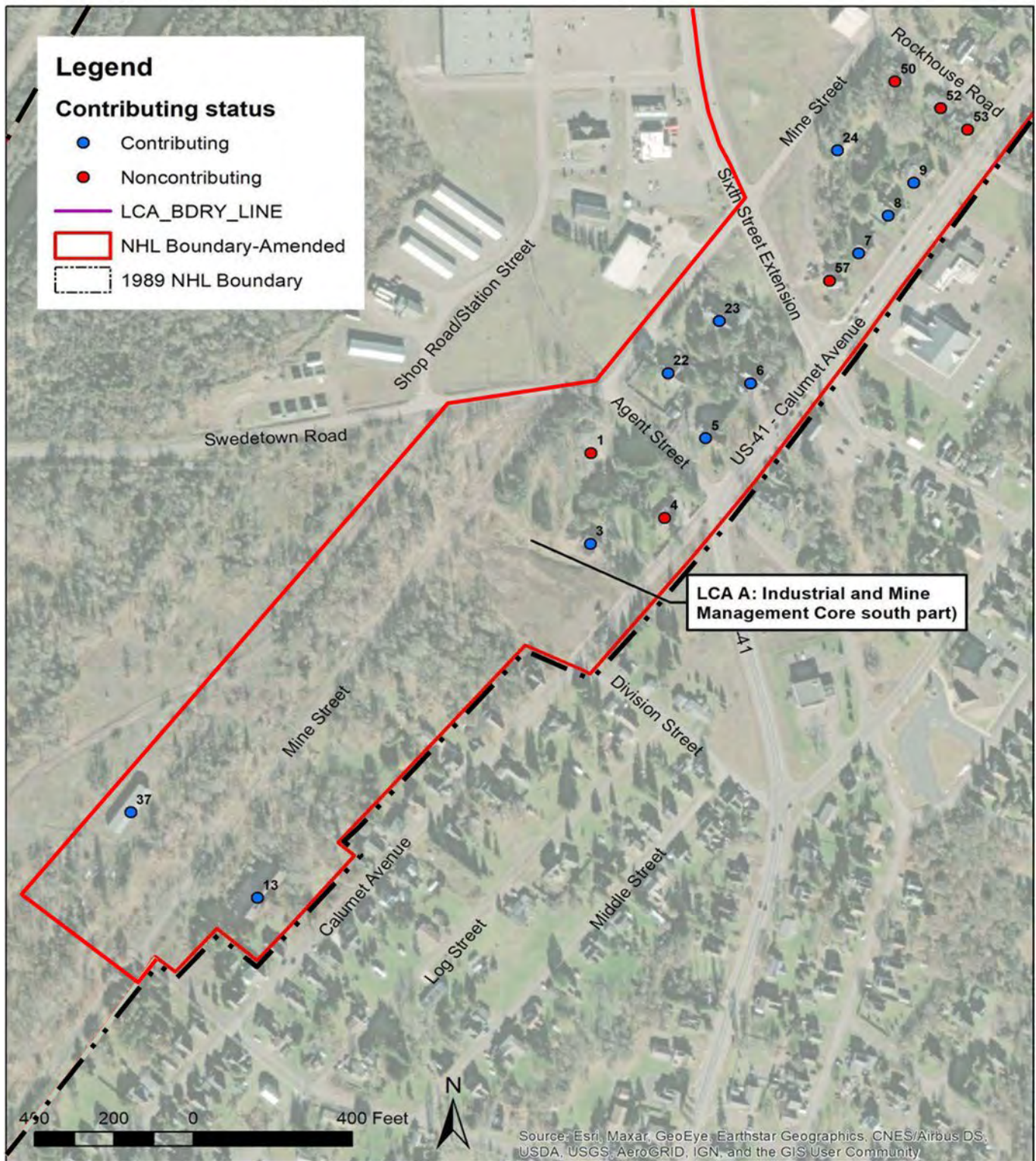
United States Department of the Interior, National Park Service

National Historic Landmarks Nomination Form

## Calumet Historic District National Historic Landmark Nomination Amendment

LCA A: Industrial and Mine Management Core (south)

Contributing and Noncontributing Resources



Map 7: Map of Landscape Character Area A (South), with the revised NHL boundary, the 1989 boundary, the Keweenaw National Historical Park boundary, and historic housing locations.

DRAFT



# CALUMET HISTORIC DISTRICT NATIONAL HISTORIC LANDMARK

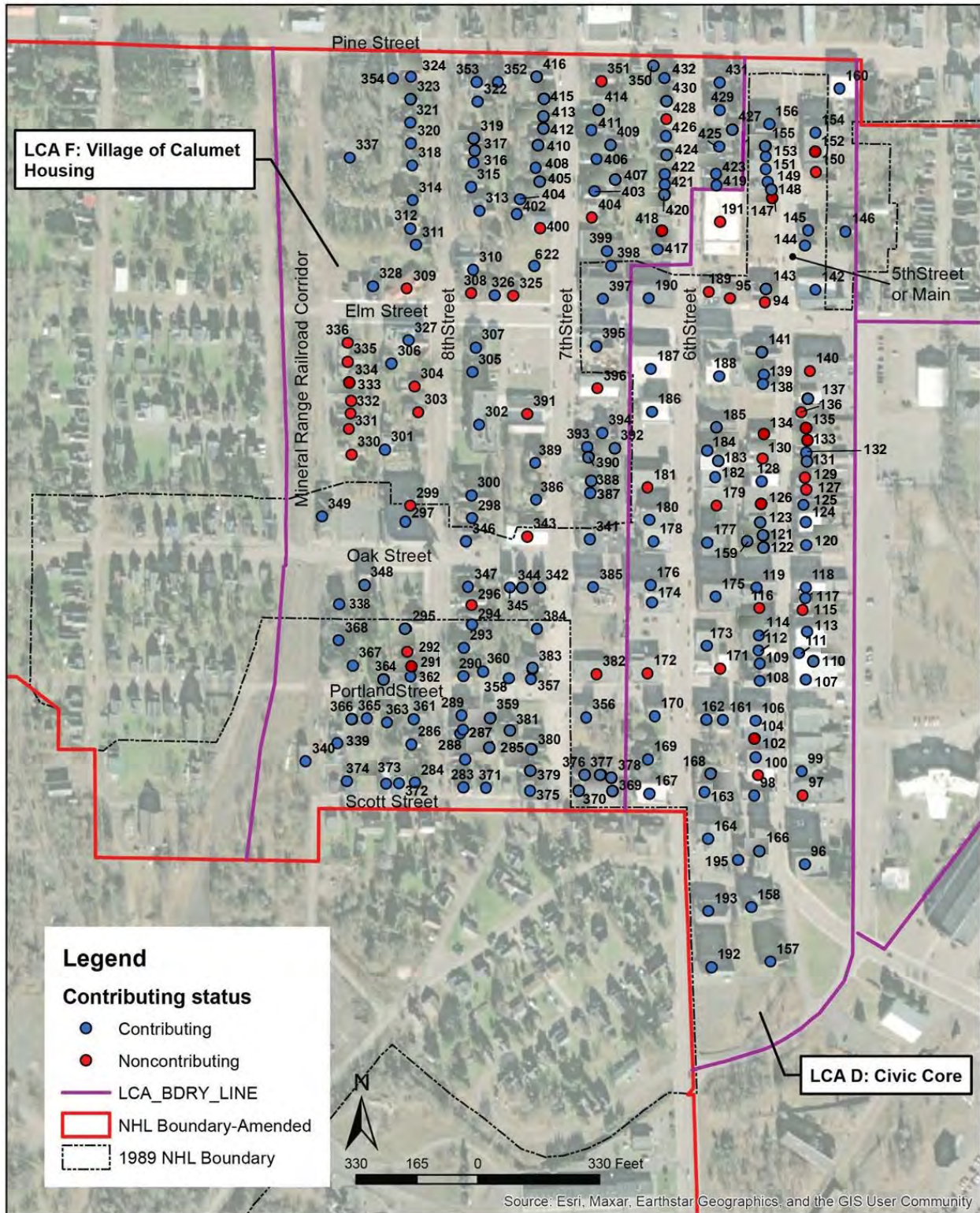
# Photos/Figures/Maps

United States Department of the Interior, National Park Service

National Historic Landmarks Nomination Form

## Calumet Historic District National Historic Landmark Nomination Amendment

LCA D: Civic Core, LCA F: Village of Calumet Housing  
Contributing and Non-Contributing Resources

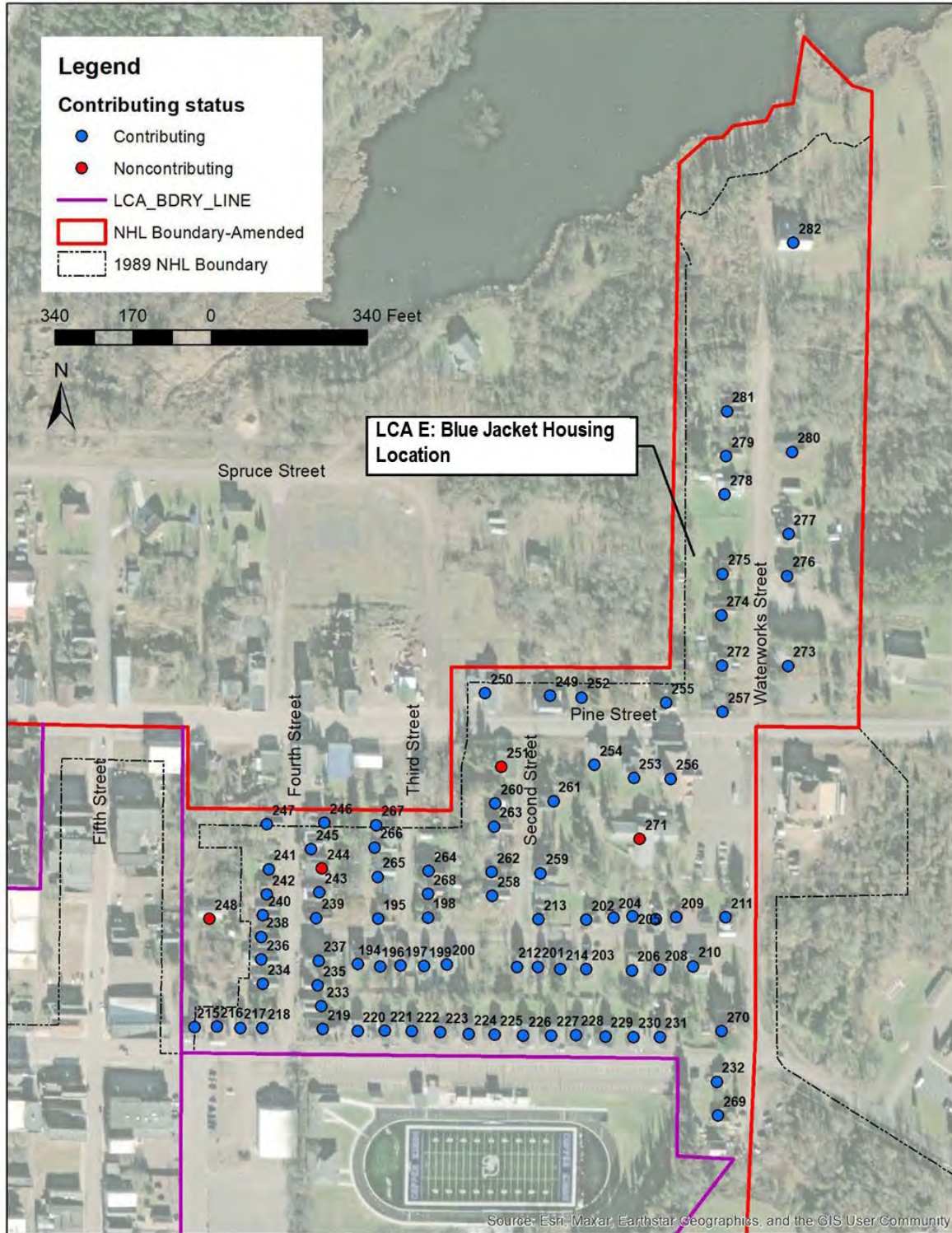


Map 8: Map of Landscape Character Areas D and F with the revised NHL boundary, the 1989 boundary, the Keweenaw National Historical Park boundary, and historic housing locations.

DRAFT



Calumet Historic District National Historic Landmark Nomination Amendment  
LCA E: Blue Jacket Housing Location Contributing and Non-Contributing Resources



Map 9: Map of Landscape Character E with the revised NHL boundary, the 1989 boundary, the Keweenaw National Historical Park boundary, and historic housing locations.

DRAFT



# CALUMET HISTORIC DISTRICT NATIONAL HISTORIC LANDMARK

# Photos/Figures/Maps

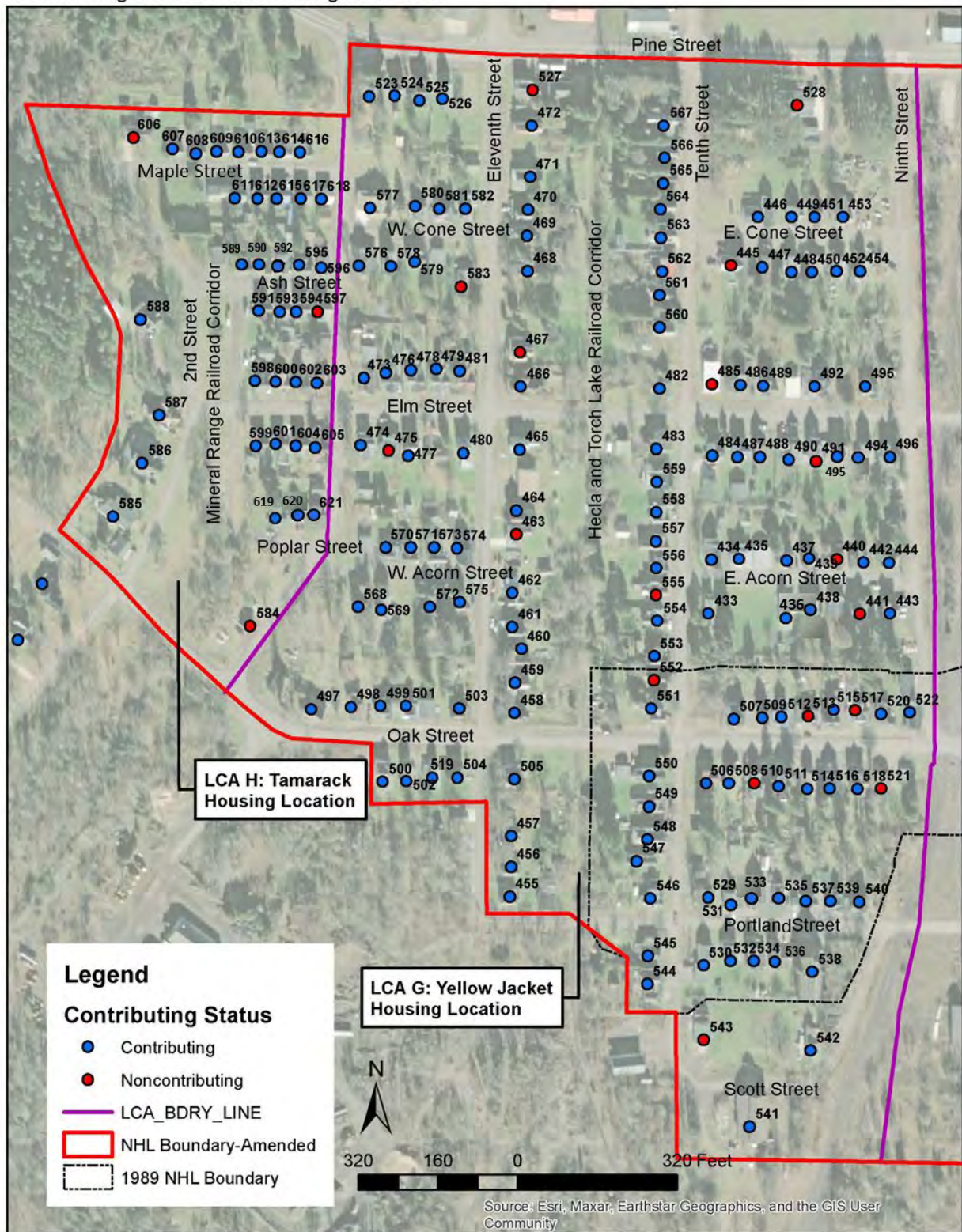
United States Department of the Interior, National Park Service

National Historic Landmarks Nomination Form

## Calumet Historic District National Historic Landmark Nomination Amendment

LCA G: Yellow Jacket Housing Location and LCA H: Tamarack Housing Location

Contributing and Non-Contributing Resources



Map 10: Map of Landscape Character Areas G and H with the revised NHL boundary, the 1989 boundary, the Keweenaw National Historical Park boundary, and historic housing locations.

DRAFT

**CALUMET HISTORIC DISTRICT NATIONAL HISTORIC LANDMARK**

**Photos/Figures/Maps**

United States Department of the Interior, National Park Service

National Historic Landmarks Nomination Form



Calumet and Hecla Mine Industrial and Management Core Landscape Character Area A. The C&H Library (Keweenaw History Center, Map ID# 46) is on the left side of Red Jacket Road, the C&H General Office (Keweenaw National Historical Park Headquarters, Map ID# 47) on the right.

Calumet Historic District

Village of Calumet

Houghton County, MI

View to northwest along Red Jacket Road at US-41/Calumet Avenue intersection.

Photo by Quinn Evans Architects, August 2018

TIFF images on file with NPS in Washington, DC

Photo 1 of 56

DRAFT



**CALUMET HISTORIC DISTRICT NATIONAL HISTORIC LANDMARK****Photos/Figures/Maps**

United States Department of the Interior, National Park Service

National Historic Landmarks Nomination Form



Calumet and Hecla Mine Industrial and Management Core Landscape Character Area A. The C&H Warehouse No. 1 (Map ID# 43) is on the left side of Red Jacket Road, the AT&T Calumet Office (Map ID# 44) is on the right. Temple Square is in the distance.

Calumet Historic District

Village of Calumet

Houghton County, MI

View to northwest along Red Jacket Road and Mine Street intersection.

Photo by Quinn Evans Architects, August 2018

TIFF images on file with NPS in Washington, DC

Photo 2 of 56

DRAFT



**CALUMET HISTORIC DISTRICT NATIONAL HISTORIC LANDMARK**

**Photos/Figures/Maps**

United States Department of the Interior, National Park Service

National Historic Landmarks Nomination Form



Calumet and Hecla Mine Industrial and Management Core Landscape Character Area A. The Russell Snow Plow (Map ID# 38) is on the left side of Red Jacket Road, the C& H Warehouse #2 (Map ID# 41) is on the right. Temple Square is in the distance.

Calumet Historic District

Village of Calumet

Houghton County, MI

View to northwest along Red Jacket Road towards Fifth Street.

Photo by Quinn Evans Architects, August 2018

TIFF images on file with NPS in Washington, DC

Photo 3 of 56

DRAFT

**CALUMET HISTORIC DISTRICT NATIONAL HISTORIC LANDMARK****Photos/Figures/Maps**

United States Department of the Interior, National Park Service

National Historic Landmarks Nomination Form



Calumet and Hecla Mine Industrial and Management Core Landscape Character Area A. [REDACTED]  
[REDACTED] to the left is the rear side of the Washington School (CLK Public Schools, Map ID# 32). The C & H Gear House (Map ID# 30) is in the middle background.

Calumet Historic District

Village of Calumet

Houghton County, MI

View to the south north of Red Jacket Road.

Photo by Quinn Evans Architects, August 2018

TIFF images on file with NPS in Washington, DC

Photo 4 of 56

DRAFT



**CALUMET HISTORIC DISTRICT NATIONAL HISTORIC LANDMARK****Photos/Figures/Maps**

United States Department of the Interior, National Park Service

National Historic Landmarks Nomination Form



Calumet and Hecla Mine Industrial and Management Core Landscape Character Area A. [REDACTED]  
[REDACTED] to the right is the C & H Warehouse #1 (Map ID# 43). The C& H Machine Shop (Map ID# 26) is in the middle distance, and the Man Engine House (Map ID# 29) is to the rear of the warehouse.

Calumet Historic District

Village of Calumet

Houghton County, MI

View to the south along Mine Street at Red Jacket Road intersection.

Photo by Quinn Evans Architects, August 2018

TIFF images on file with NPS in Washington, DC

Photo 5 of 56

DRAFT

**CALUMET HISTORIC DISTRICT NATIONAL HISTORIC LANDMARK****Photos/Figures/Maps**

United States Department of the Interior, National Park Service

National Historic Landmarks Nomination Form



Calumet and Hecla Mine Industrial and Management Core Landscape Character Area A. The Hecla Fire Department (Calumet Township Volunteer Fire Department Map ID# 25), in the foreground with the C& H Machine Shop to the rear (Map ID# 26), are parallel to Mine Street. The Head Mine Captain's Office (Map ID# 58) and the C&H Railroad Shack (Map ID# 27) are in the distance to left.

Calumet Historic District

Village of Calumet

Houghton County, MI

View to the north along Mine Street, from the Sixth Street Extension intersection.

Photo by Quinn Evans Architects, August 2018

TIFF images on file with NPS in Washington, DC

Photo 6 of 56

DRAFT



**CALUMET HISTORIC DISTRICT NATIONAL HISTORIC LANDMARK**

**Photos/Figures/Maps**

United States Department of the Interior, National Park Service

National Historic Landmarks Nomination Form



Calumet and Hecla Mine Industrial and Management Core Landscape Character Area A. The C&H Pattern Storage Warehouse (Map ID# 60) is on the right, the Sand Storage Building (Map ID# 59) in the middle, and railroad corridor to the left.

Calumet Historic District

Village of Calumet

Houghton County, MI

View to the southwest, south of Red Jacket Road, towards the Sixth Street Extension.

Photo by Quinn Evans Architects, August 2018

TIFF images on file with NPS in Washington, DC

Photo 7 of 56

DRAFT



**CALUMET HISTORIC DISTRICT NATIONAL HISTORIC LANDMARK****Photos/Figures/Maps**

United States Department of the Interior, National Park Service

National Historic Landmarks Nomination Form



Calumet and Hecla Mine Industrial and Management Core Landscape Character Area A. A remnant railroad corridor and the Russell Snow Plow (Map ID# 38) are in the center; to the right is a mature apple tree. In the center background is the C&H Warehouse #2 (Map ID# 41) and the Calumet Colosseum (Map ID# 39).

Calumet Historic District

Village of Calumet

Houghton County, MI

View to the northeast towards Red Jacket Road.

Photo by Quinn Evans Architects, August 2018

TIFF images on file with NPS in Washington, DC

Photo 8 of 56

DRAFT



**CALUMET HISTORIC DISTRICT NATIONAL HISTORIC LANDMARK****Photos/Figures/Maps**

United States Department of the Interior, National Park Service

National Historic Landmarks Nomination Form



Calumet and Hecla Mine Industrial and Management Core Landscape Character Area A. The Man Engine House (Map ID# 29) on the left and the C & H Warehouse No. 1 (Map ID# 43) in the center. In the center distance is the C& H Warehouse #2 (Map ID# 41) and the Calumet Colosseum (Map ID# 39), to the left.

Calumet Historic District

Village of Calumet

Houghton County, MI

View to the north from Mine Street towards Red Jacket Road.

Photo by Quinn Evans Architects, August 2018

TIFF images on file with NPS in Washington, DC

Photo 9 of 56

DRAFT

**CALUMET HISTORIC DISTRICT NATIONAL HISTORIC LANDMARK**

**Photos/Figures/Maps**

United States Department of the Interior, National Park Service

National Historic Landmarks Nomination Form



Calumet and Hecla Mine Industrial and Management Core Landscape Character Area A. From left to right are the Head Mine Captain's Office (Map ID# 58), the C & H Railroad Shack (Map ID# 27) and the Hecla Fire Department (Calumet Township Volunteer Fire Department, Map ID# 25).

Calumet Historic District

Village of Calumet

Houghton County, MI

View to the east the Sixth Street Extension.

Photo by Quinn Evans Architects, August 2018

TIFF images on file with NPS in Washington, DC

Photo 10 of 56

DRAFT



**CALUMET HISTORIC DISTRICT NATIONAL HISTORIC LANDMARK**

**Photos/Figures/Maps**

United States Department of the Interior, National Park Service

National Historic Landmarks Nomination Form



Calumet and Hecla Mine Industrial and Management Core Landscape Character Area A, the Hecla No. 7 & 8 Dryhouse (Map ID# 37).

Calumet Historic District

Village of Calumet

Houghton County, MI

View to the north from Mine Street.

Photo by Quinn Evans Architects, August 2018

TIFF images on file with NPS in Washington, DC

Photo 11 of 56

DRAFT



**CALUMET HISTORIC DISTRICT NATIONAL HISTORIC LANDMARK**

**Photos/Figures/Maps**

United States Department of the Interior, National Park Service

National Historic Landmarks Nomination Form



Calumet and Hecla Mine Industrial and Management Core Landscape Character Area A, the Hancock & Pewabic Boiler House (Map ID# 13).

Calumet Historic District

Village of Calumet

Houghton County, MI

View to the northeast from Mine Street.

Photo by Quinn Evans Architects, August 2018

TIFF images on file with NPS in Washington, DC

Photo 12 of 56

DRAFT



**CALUMET HISTORIC DISTRICT NATIONAL HISTORIC LANDMARK**

**Photos/Figures/Maps**

United States Department of the Interior, National Park Service

National Historic Landmarks Nomination Form



Calumet and Hecla Mine Industrial and Management Core in Landscape Character Area A, [REDACTED], now missing mining-related structures and poor rock piles.

Calumet Historic District  
Village of Calumet  
Houghton County, MI  
View to the northwest.

Photo by Quinn Evans Architects, August 2018  
TIFF images on file with NPS in Washington, DC

Photo 13 of 56

DRAFT