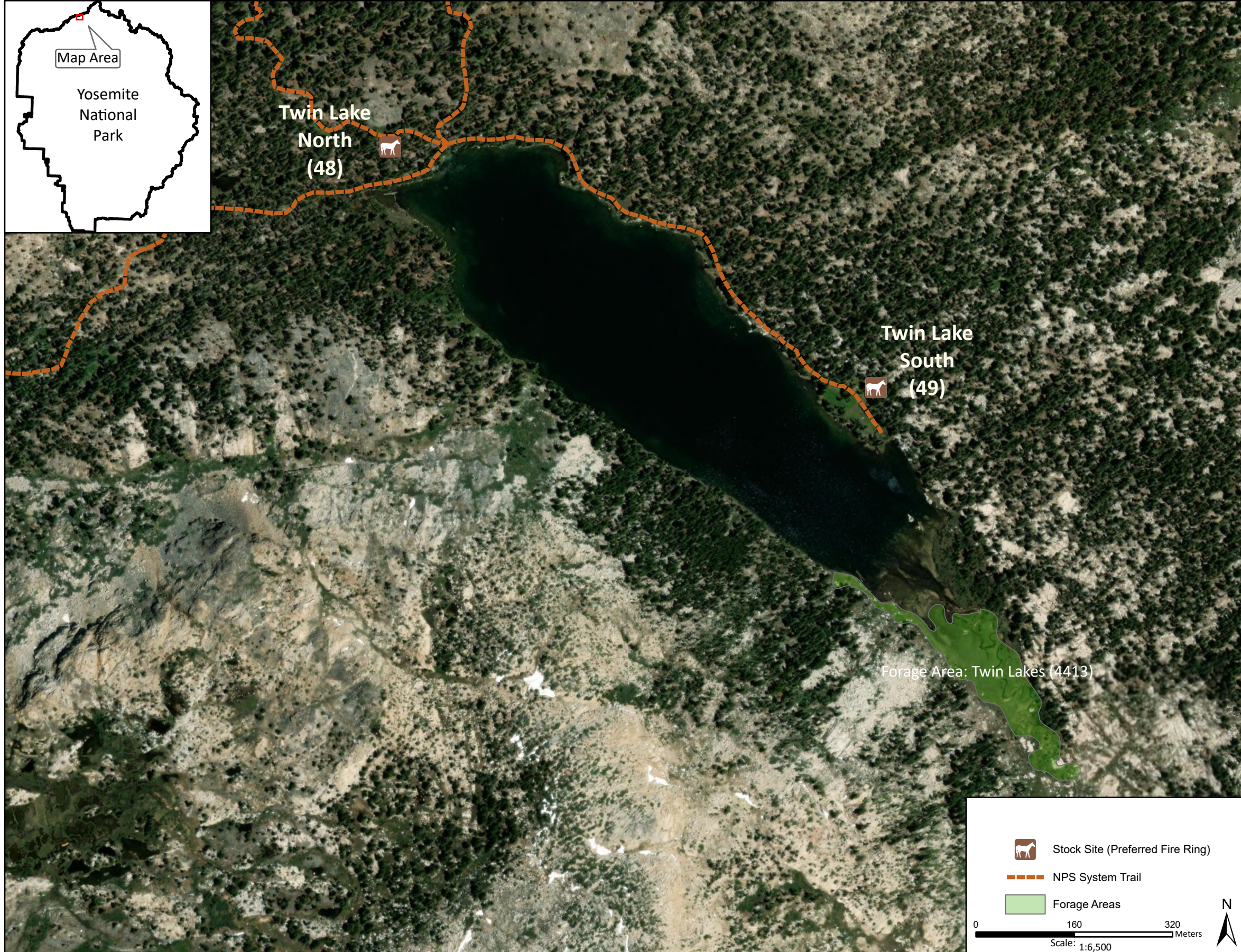
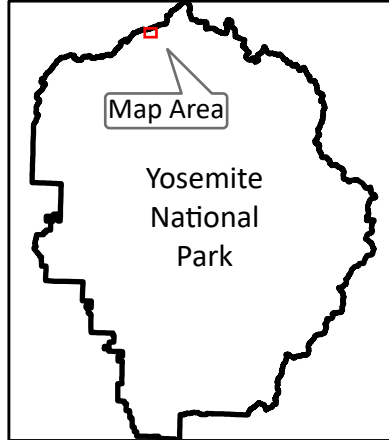


# Stock Site Evaluation Project

## Twin Lakes

Yosemite National Park  
California

National Park Service  
U.S. Department of the Interior



Forage Area: Twin Lakes (4413) - The forage options have not been investigated for Twin Lakes, but there is a meadow at the south end of the eastern lake and a small meadow at Twin Lakes - North.

### Twin Lakes - North

Camp ID: 48  
Approximate location: 266,672mE x 4,224,646mN  
This site location has not been verified. It is plotted west of the trail junction at the north end of the lake. Find a fire ring and hold stock close to the trail.

Annual Grazing Capacity: 18 stock use nights

### Twin Lakes - South

Camp ID: 49  
Fire ring: 267,462mE x 4,224,256mN  
Handling Practices: This is the primary site for the lake and is located on the southeast edge of the lake at the end of the NPS system trail. The fire ring is approximately 20 m east of the trail. The unloading area is at the fire ring. The holding area has not been identified, but should be close to the trail.

Annual Grazing Capacity: 18 stock use nights