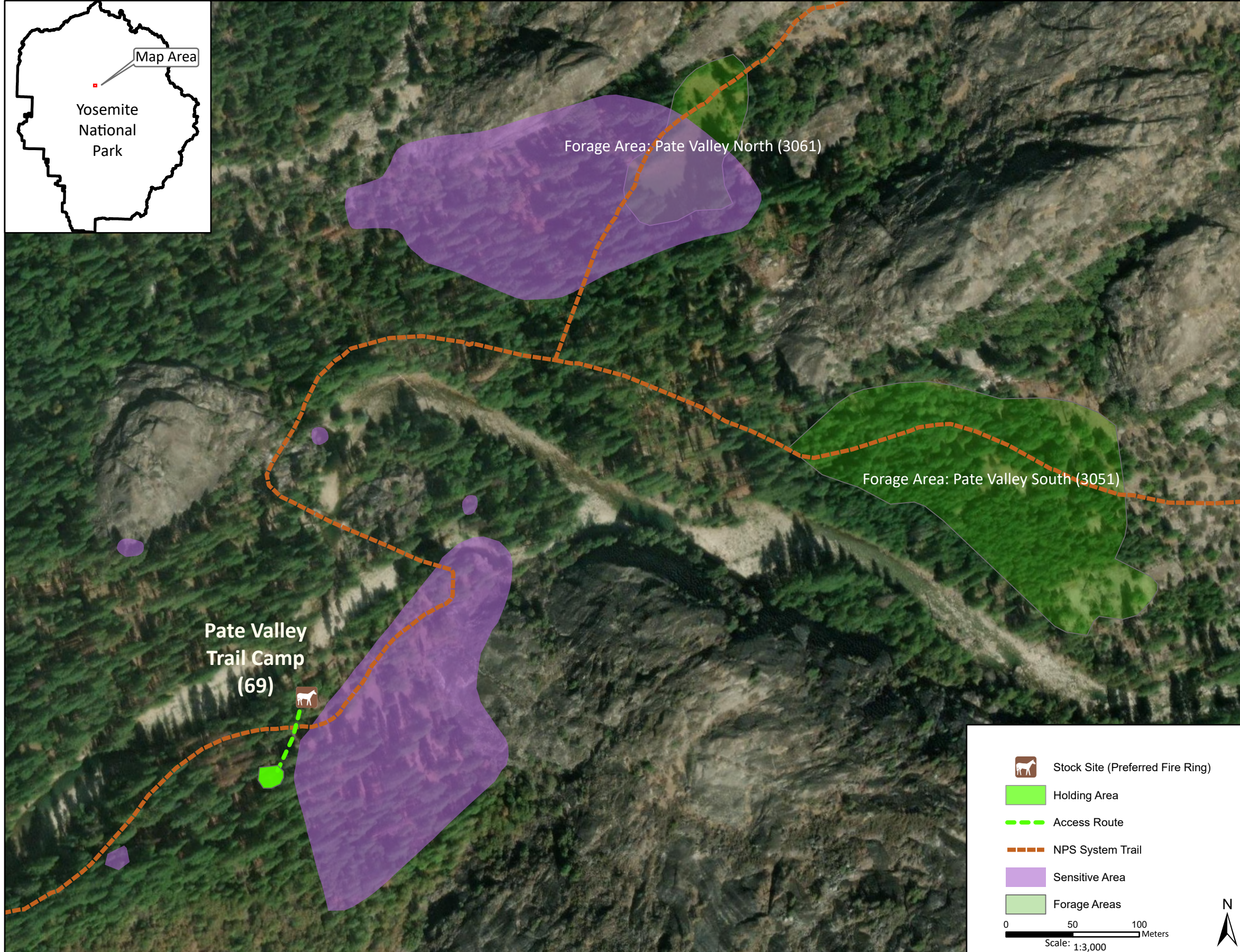
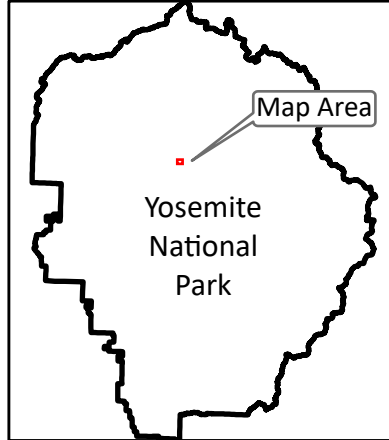


**Stock Site Evaluation Project**  
**Pate Valley Trail Camp**

Yosemite National Park  
 California

National Park Service  
 U.S. Department of the Interior



Forage Area: There is very limited understory forage at this site. There is a meadow area north of the river. However, grazing is not allowed in this meadow until the large amount of invasive plants (velvet grass) have been eradicated. This meadow also is a sensitive resource area and stock use has the potential to cause impacts. Pate Valley South (3051) is a small meadow to the south of the closed meadow.

Annual Grazing Capacity: Supplemental Feed Only

**Pate Valley Trail Camp**

Camp ID: 69  
 Fire Ring: 271,988mE x 4,201,327mN  
 Handling Practices: This site is in Pate Valley close to the footbridge over the Tuolumne River. The access route heads north 20 m from the NPS system trail to the fire ring, which is also approximately 130 m south of the footbridge. The unloading area is at the fire ring. The holding area is 30 m south of the trail. Do not camp or hold stock in the sensitive resource area indicated on the map due to concerns about stock use causing potential impacts.