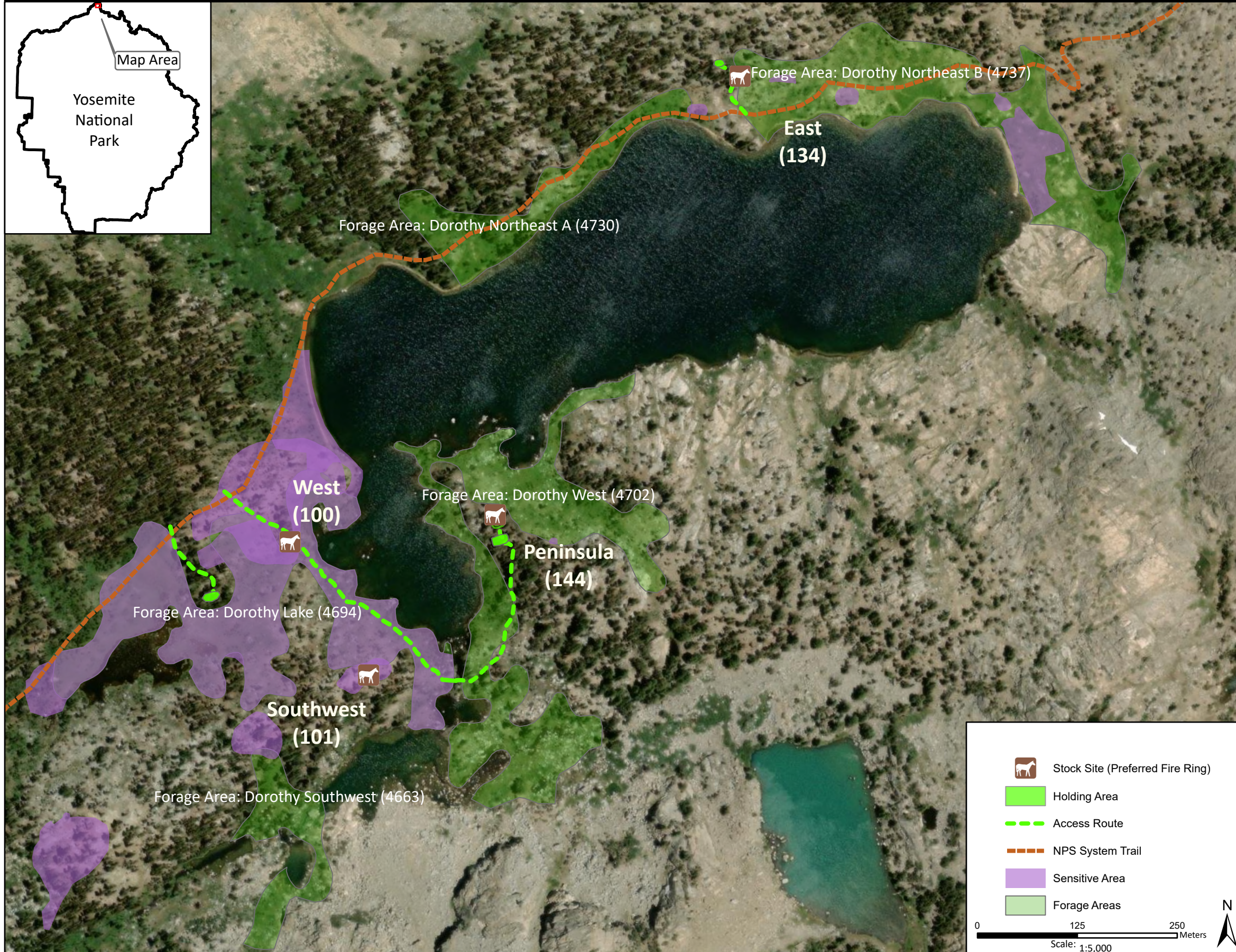
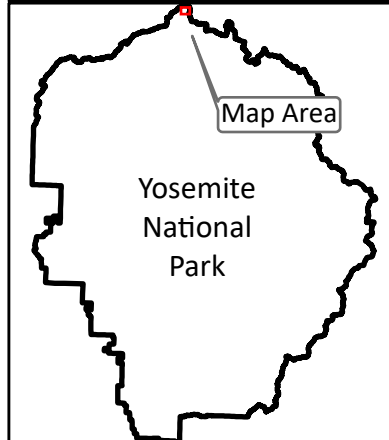


# Stock Site Evaluation Project

## Dorothy Lake East, West, Southeast, and Peninsula

Yosemite National Park  
California

National Park Service  
U.S. Department of the Interior



Forage Areas: Use the Dorothy West (4702) or Dorothy Southwest (4663) forage areas for the three camps on the west side of the lake. Avoid use of sensitive areas indicated on the map. For the camp on the east side of the lake, use Dorothy Northeast A (4730) or B (4737).

### Dorothy Lake - West

Camp ID: 100  
Fire Ring: 272,754mE x 4,228,263mN  
Handling Practices: Preferred use as drop camp only, due to concerns about stock use causing potential impacts to sensitive resources on or near this site. Use signed access route. The unloading area is next to the fire ring. Hold stock in area southwest of site following NPS system trail and access route shown on map.

Annual Grazing Capacity: 27 stock use nights

### Dorothy Lake - Southwest

Camp ID: 101  
Fire Ring: 272,853mE x 4,228,096mN  
Handling Practices: Do not use this camp if other camps are available. Do not hold stock here due to concerns about stock use causing potential impacts to sensitive resources on or near this site.

Annual Grazing Capacity: 16 stock use nights

### Dorothy Lake - East

Camp ID: 134  
Fire Ring: 273,317mE x 4,228,847mN  
Handling Practices: This camp will support small groups but has limited forage. The access route diverges from the NPS system trail and heads up the slope north between two bedrock outcrops 50 m to the fire ring. The unloading area is at the fire ring. The holding area is up the slope 25 m to the northwest.

Annual Grazing Capacity: 6 stock use nights

### Dorothy Lake - Peninsula Camp

Camp ID: 144  
Fire Ring: 273,011mE x 4,228,297mN  
Handling Practices: This is the preferred camp. Follow signed access route to camp. Unload stock at fire ring. Holding area is down the slope 20 m to the south of the fire ring. Do not use camp until seasonal pond used as holding area is dry and able to support stock with minimal soil disturbance.

Annual Grazing Capacity: 12 stock use nights